

Regime switches in the volatility and correlation of financial institutions



Working Paper Research

by K. Boudt, J. Daniélsso, S.J. Koopman and A. Lucas

October 2012 **No 227**

Editorial Director

Jan Smets, Member of the Board of Directors of the National Bank of Belgium

Editorial

On October 11-12, 2012 the National Bank of Belgium hosted a Conference on "*Endogenous Financial Risk*".

Papers presented at this conference are made available to a broader audience in the NBB Working Paper Series (www.nbb.be).

Statement of purpose:

The purpose of these working papers is to promote the circulation of research results (Research Series) and analytical studies (Documents Series) made within the National Bank of Belgium or presented by external economists in seminars, conferences and conventions organised by the Bank. The aim is therefore to provide a platform for discussion. The opinions expressed are strictly those of the authors and do not necessarily reflect the views of the National Bank of Belgium.

Orders

For orders and information on subscriptions and reductions: National Bank of Belgium,
Documentation - Publications service, boulevard de Berlaimont 14, 1000 Brussels.

Tel +32 2 221 20 33 - Fax +32 2 21 30 42

The Working Papers are available on the website of the Bank: <http://www.nbb.be>.

© National Bank of Belgium, Brussels

All rights reserved.

Reproduction for educational and non-commercial purposes is permitted provided that the source is acknowledged.

ISSN: 1375-680X (print)

ISSN: 1784-2476 (online)

Regime Switches in Volatility and Correlation of Financial Institutions

Kris Boudt*

KU Leuven/Lessius
V.U. University Amsterdam

Jón Daniélfsson

London School of Economics.

Siem Jan Koopman

V.U. University Amsterdam
Tinbergen Institute

Andre Lucas

V.U. University Amsterdam
Tinbergen Institute

September 3, 2012

Abstract

We propose a parsimonious regime switching model to characterize the dynamics in the volatilities and correlations of US deposit banks' stock returns over 1994–2011. A first innovative feature of the model is that the within-regime dynamics in the volatilities and correlation depend on the shape of the Student t innovations. Secondly, the across-regime dynamics in the transition probabilities of both volatilities and correlations are driven by macro-financial indicators such as the Saint Louis Financial Stability index, VIX or TED spread. We find strong evidence of time-variation in the regime switching probabilities and the within-regime volatility of most banks. The within-regime dynamics of the equicorrelation seem to be constant over the period.

*This paper was prepared for the 2012 National Bank of Belgium biannual colloquium on *Endogenous Financial Risk*. Financial support from the National Bank of Belgium and Dutch Science Foundation is gratefully acknowledged. We thank David Ardia, Charles Bos, Hans Dewachter, Sébastien Laurent, Joshua Ulrich, and Raf Wouters for helpful comments. This is still ongoing research. Comments are welcome. Correspondence to: kris.boudt@econ.kuleuven.be.

1 Introduction

The prediction of volatility and correlation of financial assets is key in the study of financial stability as well as for internal risk management of financial institutions. In spite of the ample theoretical and empirical evidence in support of regime switching in both the macro economy and financial markets, standard, non-switching, volatility models, like the GARCH family, remain dominant in practical use. This means that such models are likely to fail when they are perhaps most needed, at the time of a transition between a low risk and high risk regime. This became especially clear in the transition from the low risk environment before the financial crisis started in the summer of 2007, to the extreme volatility a year and a half later. Addressing this problem is the main motivation of our paper.

The regime switching model we propose has three innovative features. First, using the generalized autoregressive score framework of Haas et al. (2004), we let the shape of the estimated density function directly affect the variance and correlation forecasting functions. In particular, the model accounts for the fact that the heavier the tails of the distribution, the more likely it is that an extreme observation is due to a realization from the (fat) tail rather than a recent volatility increase. As such, the model limits the potential adverse effect of extreme observations on estimation and forecasting of volatility and correlation by downweighting the impact of the most extreme observations. In the special case of normal innovations, the proposed regime switching volatility model coincides with the regime switching GARCH(1,1) model of Haas et al. (2004).

Our second contribution is to assume an equicorrelation structure when modeling the regime switching dependence. This restriction reduces the generality of the universe to which the model can be applied, and in particular, often implies that stocks belong to the same sector (Engle and Kelly, 2012). The loss of flexibility

is compensated by several important advantages. First, the estimated correlations are robust to changes in the universe constituents, which is a crucial requirement for our application to the US deposit bank sector. Second, by averaging across similar pairs of stocks, the impact of single extreme observations on the dynamics is attenuated. Finally, it is computationally more tractable in the presence of many assets. Evaluation of the likelihood function of the proposed model, for example, does not require any matrix inversion.

Our final contribution is to make use of state variables in the modeling and forecasting of switching probabilities. There are several potentially useful candidates for such variables, and we examine the Saint Louis Financial Stability index, the VIX or TED spread. While state variables have generally not been found useful in volatility forecasting, our results indicate that they do make a significant contribution to predicting regime switching probabilities.

Our application is to weekly returns on the largest US headquartered bank holding companies, over January 1 1994 - June 30 2011. We find strong evidence of time-variation in the regime switching probabilities and the within-regime volatility of most banks, while the within-regime dynamics of the equicorrelation seem to be constant over the period.

The remainder of the paper is organized as follows. First we give in Section 2 a short review of the literature on changes in the risk regime of financial institutions. Section 3 presents the proposed regime switching volatility-correlation model for analyzing the risk of financial institutions. Section 4 introduces the data. The results of the empirical analysis are presented in Section 5. Section 6 concludes the paper and outlines some directions for further research.

2 Review on changes in the risk regime of financial institutions

Daniélsson and Shin (2003) emphasize the distinction between episodes of exogenous and endogenous risk. At times of exogenous risk, price changes can be considered to be solely due to reasons outside the control of market participants. Endogenous risk arises when the behavior of market players creates additional risk with respect to the uncertainty of fundamental news. There are several mechanisms through which endogenous risk can arise. A first one is that during periods of crises, information and beliefs become much more uniform and people behave in a similar way, amplifying the uncertainty in the market. Due to an exogenous adverse shock to capital, for example, the perceived volatility increases and market participants decide to sell their assets, which in turn leads to a drop in prices and a further increase in perceived and realized volatility. When the financial sector is undercapitalized, risk budget constraints enforce financial institutions to shed risky assets and sell at this lower price, which in turn prompts a further fall in prices causing a continuation of the increased volatility and potential further sales, creating a feedback loop of volatility increases and fire sales of risky assets. Another example of such feedback effects is the link between an asset's market liquidity and traders' funding liquidity. This liquidity spiral arises under the model of Brunnermeier and Pedersen (2009) when financiers increase margins in response to deteriorations in market liquidity, causing traders to de-lever and decreasing further market liquidity.

These coordinated responses of market participants could be an explanation for the presence of extreme dependence in financial markets. This means that during times of turmoil, the dependence in the movement of asset prices tends to become stronger. Increased dependence makes investing in financial markets riskier, lowers

the benefits of portfolio diversification and increases the proportion of systematic market risk. Campbell et al. (2008) call this phenomenon “Diversification Melt-down”.

Also changes in the fundamentals of the macroeconomy can cause regime switches in financial risk. One of the first to document the relation between U.S. recessions and an increase in aggregate market volatility is Officer (1973) who attributed the very high stock market volatility of the 1930s to the economic recession of that period. Several studies have confirmed this close relation between financial volatility and the economic cycle. Hamilton and Lin (1996), for example, estimated a bivariate regime switching model with high and low real growth states and equity return volatility states and found a strong positive correlation between the estimated probabilities to be in the low real growth state and high equity return volatility state. The implicit view in Hamilton and Lin (1996) is that stock volatility must ultimately be driven by fluctuations in macroeconomic fundamentals, such as GDP, interest rates, oil prices and money supply.

Changes in the risk regimes could explain the formation of asset price cycles. In fact, the current practice in risk models is to use a rolling window volatility estimate or a GARCH model, extrapolating the recent history to the future. This might lead then to asset price bubbles in stable periods, since underestimation of risk leads to an overvaluation of financial assets (Danielsson, 2011). Often the investment and risk management decision are delegated to a financial intermediary such that the ultimate lender is unable to observe how risky the investment of the borrower is of potential agency problems at the level. Asset price bubble might arise when the intermediation is plagued by agency problems due to e.g. the use of debt contracts and the limited liability these involve (Allen and Gale, 2000), or when the investment managers bear limited downside risk because the worst that can happen to them is

that they are fired (Allen and Gorton, 1993).

In a financial system where balance sheets are marked to market, these asset price cycles affect directly the balance sheets of the financial institutions and as noted by Adrian and Shin (2010) banks react procyclically to this. If banks were passive, an increase in the value of their assets, leads to a drop in leverage. Adrian and Shin (2010) observed however that historically banks seem to have a constant leverage target: during the boom, they take on more short term debt and expand their balance sheet. And vice versa during the downturn. In such a manner, asset price cycles create cycles in the balance sheet decisions of financial institutions.

3 A score based regime switching volatility-correlation model

We are interested in the evolution of the volatility and correlation of the weekly returns of the N_t largest US deposit banks over the period January 1 1994 - June 30 2011. For simplicity in notation, we take N as constant, but in the empirical application, N varies between 13 and 15 in function of data availability. Let $y_t = (y_{1t}, \dots, y_{Nt})'$ denote the $N \times 1$ vector of time t stock returns with conditional density function $f_{t|t-1}(y_t; \theta)$. The model will be such that the parameter vector θ decomposes into N parameters θ_i associated with margin i and a parameter θ_* for the copula density function. Because of the copula assumption, the conditional density function can be rewritten as the product of the marginal densities $f_{it|t-1}$ and the copula density denoted $c_{t|t-1}$:

$$f_{t|t-1}(y_t; \theta) = \prod_{i=1}^N f_{it|t-1}(y_{it}; \theta_i) \cdot c_{t|t-1}(F_{1t|t-1}(y_{1t}), \dots, F_{Nt|t-1}(y_{Nt}); \theta_*). \quad (3.1)$$

The marginal density functions will be assumed to be standardized student t distributed, and the copula is the standardized multivariate student t distribution with uniform $(0, 1)$ marginals.

In the following two subsections we first present the model for the within-regime dynamics in the volatility and correlation. A large number of volatility and correlation specifications have been proposed in the past, both in the single and multiple regime case. The approach taken here follows the Generalized Autoregressive Score (GAS) framework of Creal et al. (2012) in which the score of the density function is taken as the driver for the time-varying volatility and correlation parameters. It follows that differences in the density function can lead to different volatility and correlation models. The proposed model approach deviates slightly from the general framework of Creal et al. (2012) by using, instead of the full conditional density function, the regime-specific conditional marginal (resp. copula) density function to drive the time-variation in the volatility (resp. correlation parameter) of that regime. This approach has the particular advantage that the regime-specific volatility and correlation process does not depend on the regime paths. It further allows to have different volatility model specifications for each of the bank return series and, combined with the equicorrelation assumption, it makes the estimation feasible in high dimensions. In the Appendix a short introduction to the general GAS framework is given and details on how the application of this framework leads to the models presented below. While the within-regime volatility and correlation dynamics are driven by the past return series, state variables are used to drive the time-variation in the transition probabilities across regimes. Finally, we present a two-step maximum likelihood method for estimating the proposed model.

3.1 Model for the marginal distribution

There is ample empirical evidence for the presence of low and high volatility regimes for many financial assets.¹ Previous research has either assumed that within the regime, volatility is either constant or time-varying according to the regime switching extension of the Bollerslev (1986) GARCH(1,1) model (Gray, 1996; Klaassen, 2002; Haas et al., 2004). More precisely, the regime-switching GARCH(1,1) of Haas et al. (2004) specifies that the conditional variance of asset i in regime k is a weighted sum of the realized variance on day $t - 1$ and the predicted regime k variance for day $t - 1$:

$$h_{it}^k = \omega_i^k + \alpha_i^k (y_{it-1} - \mu_i^k)^2 + \beta_i^k h_{it-1}^k, \quad (3.2)$$

with μ_i^k the conditional mean of asset i in regime k (for simplicity, we assume no within-regime dynamics in the mean) and $k \in \{I, II\}$.

Several authors (Dueker, 1997; Klaassen, 2002) have then combined these regime switching GARCH(1,1) type of models with Student t innovations, since they significantly improve the model likelihood and lead to more stable regimes. The standardized student t density function with mean μ_i^k , conditional variance h_{it}^k and number of degrees of freedom ν_i^k is

$$t_{\nu_i^k}(y_{it}, \mu_i^k, h_{it}^k) = \frac{1}{\sqrt{h_{it}^k}} \frac{\Gamma\left(\frac{\nu_i^k+1}{2}\right)}{\Gamma\left(\frac{\nu_i^k}{2}\right) [\pi(\nu_i^k - 2)]^{\frac{1}{2}}} \left[1 + \frac{(y_{it} - \mu_i^k)^2}{h_{it}^k(\nu_i^k - 2)}\right]^{-\frac{1+\nu_i^k}{2}}, \quad (3.3)$$

where $\Gamma(\cdot)$ is the gamma function.

In a single regime setup, however, Creal et al. (2012) and Harvey and Chakravarty

¹Throughout the paper, we will assume that for each series there are either one or two volatility regimes. In the application, the number of regimes is determined using the BIC criterion. The assumption of at most two regimes keeps notation tractable and is in line with previous empirical research showing evidence of a high and low volatility regime. Regimes are indicated with Roman numbers (ie regime I and II).

(2008) have argued that one should design conditional volatility models differently for fat-tailed distribution than for normal distribution. The intuition is clear: the more heavy tailed the distribution, the less likely it becomes that an extreme observation is due to an increase in volatility.

This is appropriately accounted for by the Student t score based volatility model, where the conditional volatility is no longer a linear combination of squared observations, but it downweights observations in function of their extremeness and the tail thickness:

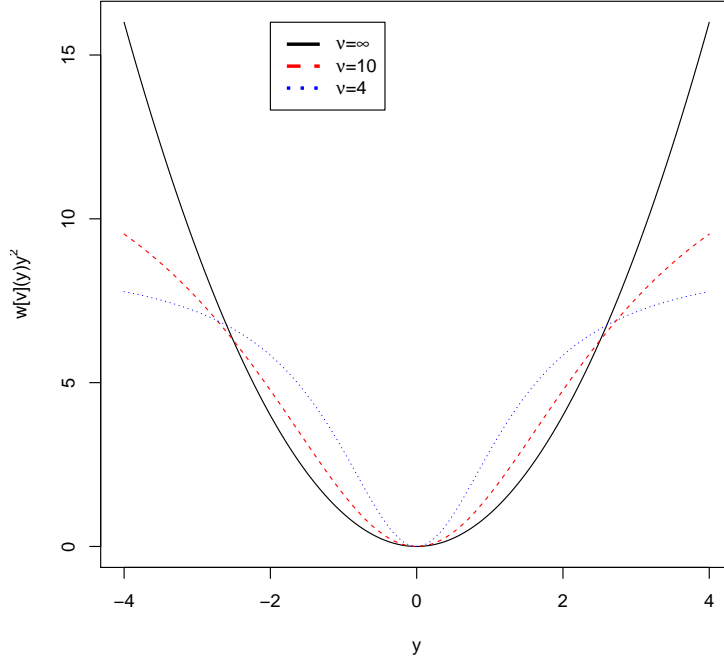
$$h_{it}^k = \omega_i^k + \alpha_i^k(1 + 3/\nu_i^k) \frac{\nu_i^k + 1}{[\nu_i^k - 2] + \frac{[y_{it-1} - \mu_i^k]^2}{h_{it-1}^k}} (y_{it-1} - \mu_i^k)^2 + \beta_i^k h_{it-1}^k. \quad (3.4)$$

Note that for $\nu_i^k = \infty$, we retrieve the usual GARCH(1,1) model. In the estimation we impose the usual inequalities $\omega_i^k, \alpha_i^k, \beta_i^k > 0$ such that the conditional variance process is guaranteed to be positive. We further assume that $\nu_i^k > 2$ such that in each regime there is a finite variance.²

The difference in volatility impact in function of the tail fatness is illustrated in Figure 1. The full line indicates the case of normal innovations, where the model coincides with a GARCH model and the impact of lagged returns on future volatility is quadratic. The dashed and dotted lines correspond to Student t innovations with 10 and 4 degrees of freedom, respectively. We see that the volatility impact is still increasing as a function of the magnitude of the return, but less than quadratic and, the thicker the tails are, the more extreme observations are downweighted compared to the quadratic impact under the normal model.

²An alternative approach for accounting for the proportionally smaller impact of extreme observations is the class of bounded innovation propagation volatility models, proposed by Muler and Yohai (2008), Boudt and Croux (2010) and Boudt et al. (2012). This approach only specifies the central model generating the majority of the return observations and estimates this model using a robust estimation techniques to ensure that the parameter estimates are not much affected by a few extreme price movements that are unlikely to occur under the central model.

Figure 1: News impact curve under the Student t score-based conditional variance model



3.2 Model for the conditional copula density function

All assets considered here are major US deposit banks. For such a homogeneous group of assets, it is reasonable to assume that the correlation parameter in the copula density function is the same for all pairs of stocks. This so-called “dynamic equicorrelation parameter” has been extensively studied by Engle and Kelly (2012), under the assumption that there are no shifts in the unconditional equicorrelation. In our application on financial institutions, this assumption is likely to be violated. Because of the interconnectedness between financial institutions, episodes of high systemic risk are characterized by dramatic changes in the volatility and correlations of financial institutions. See e.g. the recent empirical evidence in Leonidas and Italo de Paula (2011) and the review in Section 2. Ang and Chen (2002) find that

regime-switching models perform best in explaining the difference in correlation in normal versus extreme downside regimes.

We allow for two correlation regimes and the dependence in each regime is modeled through a Student t copula. More precisely, we assume that in the correlation regime $s_{*t} = k$, the copula is a Student t copula with ν_*^k degrees of freedom and correlation matrix R_{*t}^k .³ Denote $u_{it} \in (0, 1)$ the probability integral transform of y_{it} and \tilde{y}_{it}^k the u_{it} quantile of the univariate standardized Student t distribution with ν_*^k degrees of freedom. The corresponding Student t copula density in regime $s_{*t} = k$ is:

$$c_{t|t-1}(u_t, \nu_{*t}^k, R_t^k) = (\det R_t^k)^{-1/2} \frac{t_N[(\tilde{y}_t^k)'(R_t^k)^{-1}(\tilde{y}_t^k), \nu_*^k]}{\prod_{i=1}^N t_1[(\tilde{y}_{it}^k)^2, \nu_*^k]}, \quad (3.5)$$

with $t_N(z, \nu)$ the standardized multivariate student t density function:

$$t_N(z, \nu) = \frac{\Gamma\left(\frac{\nu+N}{2}\right)}{\Gamma\left(\frac{\nu}{2}\right) [\pi(\nu-2)]^{\frac{N}{2}}} \left[1 + \frac{z}{\nu-2}\right]^{-\frac{N+\nu}{2}}, \quad (3.6)$$

where $\Gamma(\cdot)$ is the gamma function.

Under the equicorrelation assumption, the correlation matrix in the correlation regime k can be rewritten as:

$$R_t^k = [1 - \rho_t^k]I_N + \rho_t^k J_N, \quad (3.7)$$

where I_N is the N -dimensional identity matrix and J_N the $N \times N$ matrix of ones. Besides computational convenience⁴, an important advantage of this restriction is that the time-variation in R_t^k can still be estimated, even if the universe changes on

³This correlation matrix is not the conditional correlation of the stock returns, as the marginal distributions and the copula have different degrees of freedom parameters.

⁴We have the following computationally convenient formulas for the determinant and Maha-

a regular basis.

To make sure that the estimated correlations are bounded, we specify ρ_t^k as the hyperbolic tangent of an underlying process q_t^k :

$$\rho_t^k = (\exp(2q_t^k) - 1)/(\exp(2q_t^k) + 1). \quad (3.8)$$

The q_t^k process is further truncated to make sure that R_t^k is always positive definite.⁵

The specification for the dynamics of q_t^k is obtained under the t GAS framework in Creal et al. (2011). Under this framework, q_t^k is modeled as a linear function of the score of the Student t copula density function:

$$q_t^k = \omega_*^k + \alpha_*^k(q_{t-1}^k + S_{t-1}^k \nabla_{t-1}^k) + \beta_*^k q_{t-1}^k, \quad (3.9)$$

where $\nabla_t^k = \partial \log c_{t|t-1}(u_t, \nu_{*t}^k, R_t^k)/\partial q_t^k$ is the score of the Student t copula density function in correlation regime k and S_t^k is the inverse of the conditional standard deviation of the score, and $\alpha_*^k, \beta_*^k > 0$.

In Appendix, we show that the standardized score is given by:

$$S_t^k \nabla_t^k = m_t^k \left[b_t^k \left(\frac{w_t^k}{(N-1)N} \sum_{i=1}^N \sum_{j \neq i} \tilde{y}_{it} \tilde{y}_{jt} - \rho_t^k \right) + a_t^k \left(\frac{w_t^k}{N} \sum_{i=1}^N \tilde{y}_{it}^2 - 1 \right) \right], \quad (3.10)$$

lanobis distance:

$$\begin{aligned} \det R_t^k &= [1 - \rho_t^k]^{N-1} [1 + (N-1)\rho_t^k] \\ (\tilde{y}_t^k)' (R_t^k)^{-1} \tilde{y}_t^k &= \frac{1}{1 - \rho_t^k} \left[\sum_i (\tilde{y}_{it}^k)^2 - \frac{\rho_t^k}{1 + (N-1)\rho_t^k} \left(\sum_i \tilde{y}_{it}^k \right)^2 \right]. \end{aligned}$$

The use of these formulae lends itself to an efficient evaluation of the log-density of the sample, whereby no matrix inversion is required.

⁵A necessary and sufficient condition for positive definiteness of R_t^k is that $-1/(N-1) < \rho_t^k < 1$. In practice, we imposed this condition in the optimization by a lower and upper truncation of q_t^k at $0.5(\log(N+0.01) - \log(N+2.01))$ and 2.75.

with $a_t^k = -\rho_t^k(2 + \rho_t^k(N - 2))$, $b_t^k = 1 + (\rho_t^k)^2(N - 1)$, and importantly, the weighting factor

$$w_t^k = [N + \nu_*^k] / [\nu_*^k - 2 + (\tilde{y}_t^k)'(R_t^k)^{-1}(\tilde{y}_t^k)].$$

The scaling factor $m_t^k > 0$ is defined in the Appendix.

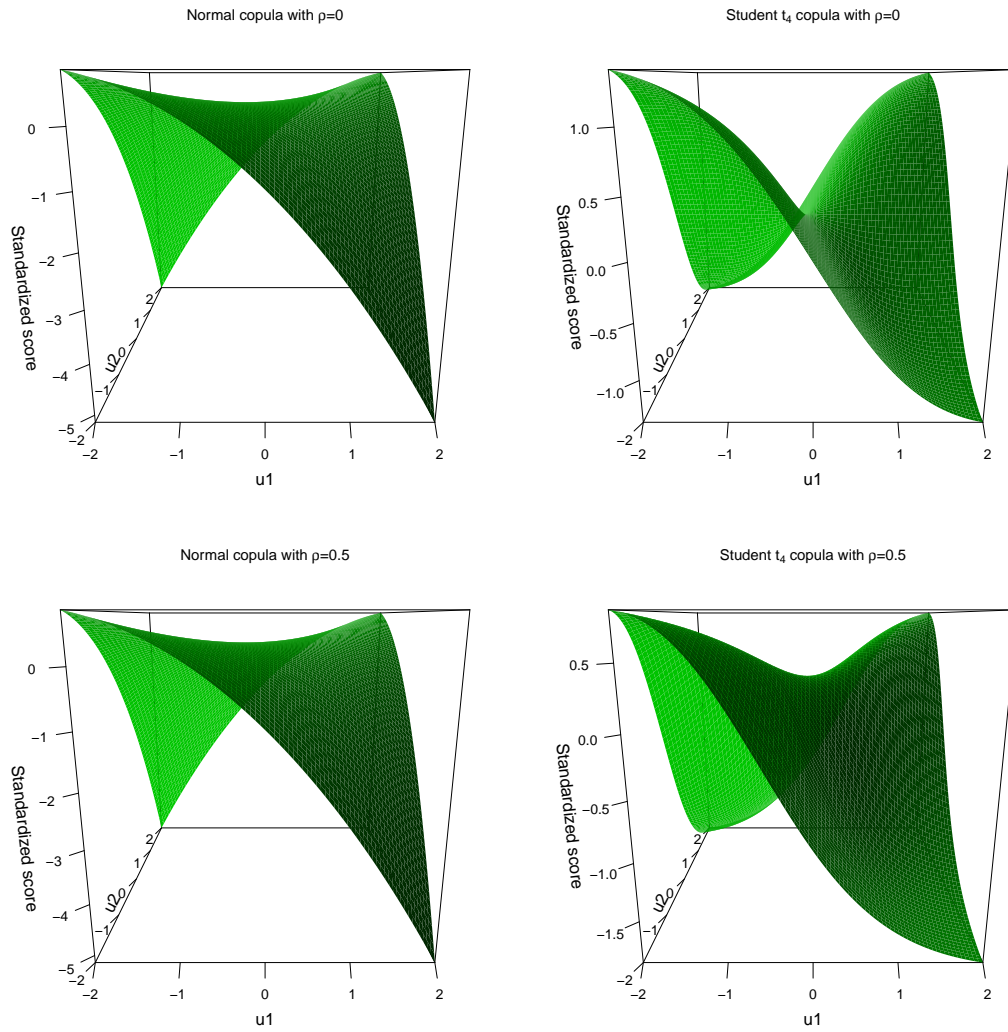
The score has three main components: (i) the excess value of the cross-product of weighted devolatilized returns and the conditional correlation, (ii) the excess value of the Euclidian norm of those returns and unity and (iii) the weights applied to the devolatilized returns. The first component is probably the most intuitive, as it enforces an increase in the conditional correlation process when the average cross-product of the devolatilized returns exceeds the conditional correlation ρ_t^k . This is as expected, and very much in line with the dynamic conditional correlation specifications in the DCC model of Engle (2002) and DECO model of Engle and Kelly (2012).

A drawback of using the average cross-product of devolatilized returns as a proxy for correlations is that it does not correct for the dispersion. In fact, the higher the dispersion, the less informative high values of the cross-products are about increases in correlation. It is intuitively clear that in a bivariate setting, the correlation signal of (1, 1) is much stronger than (1/4, 4), even though their cross-product is the same. The second term in the score corrects for this. For $\rho_t^k > 0$, it reduces the score when the Euclidian norm of the weighted devolatilized returns exceeds its expected value of unity.

A final important feature in the score is the weighting of the returns in function of their extremeness as measured by the Mahalanobis distance, with weights that depend on the dimension of the series N , the value of the correlation coefficient ρ_t^k and the tail thickness parameter ν_*^k . The thicker the tails, the more likely it is

that abnormally large values of the realized covariance compared to the predicted correlation are due to the heavy-tailed feature of the distribution rather than changes in correlation. For this reason, we see that the effect of the downweighting increases when the tail parameter is small and the observation is more extreme. For $\rho_t^k = 0$ and $\rho_t^k = 0.5$, we illustrate this in Figure 2, where we plot the values of the standardized score $S_{t-1}^k \nabla_{t-1}^k$ for a bivariate vector u with component values between -2 and 2. The score is shown for the bivariate Gaussian copula (left panel) and the Student t copula with 4 degrees of freedom (right panel). From the graph, the importance of the impact of the choice of density on the score, and hence the correlation dynamics, is clear. The more thick-tailed the copula is, the more extreme observations are downweighted. Because the weights depends on the Mahalanobis distance, the value of ρ_t^k impacts the curvature and which values are considered as extreme.

Figure 2: Standardized score under the equicorrelation normal (left panel) and Student t_4 (right panel) copula model for $N = 2$.



3.3 Dynamics across volatility and correlation regimes

It can be expected that the likelihood of staying in a regime depends on the changing market conditions, and that the VIX and TED spread are useful state variables determining the intensity of regime changes.

Besides the VIX and TED spread, there are many potential candidates for economic variables driving the time variation in the transition probabilities of the volatility and correlation regimes. An aggregate index for financial stability was developed by the Federal Reserve of Saint Louis. This so-called Saint Louis Financial Stability Index (STLFSI) is defined as the first principle component of eighteen major financial time series capturing some aspect of financial stress.⁶

Henceforth, let x be the series driving the time-variation in the transition probabilities. Denote $\psi_{it} = (\psi_{it}^I \psi_{it}^{II})'$ the 0/1 probability value to be in the low and high volatility regime for asset i . We assume the states follow a Markov process with the 2×2 dynamic transition matrix P_{it} . The diagonal elements of this matrix are parameterized using the logit transformation of the time-varying quantities π_{it}^I and π_{it}^{II} :

$$\begin{aligned} P_{(11)it} &= \exp(\pi_{it}^I) / [1 + \exp(\pi_{it}^I)] \\ P_{(22)it} &= \exp(\pi_{it}^{II}) / [1 + \exp(\pi_{it}^{II})]. \end{aligned}$$

⁶The complete list of variables is composed of 7 interest rates (Effective federal funds rate, 2-year Treasury, 10-year Treasury, 30-year Treasury, Baa-rated corporate, Merrill Lynch High-Yield Corporate Master II Index, Merrill Lynch Asset-Backed Master BBB-rated), 6 yield spreads (10-year Treasury minus 3-month Treasury, Corporate Baa-rated bond minus 10-year Treasury, Merrill Lynch High-Yield Corporate Master II Index minus 10-year Treasury, 3-month London Interbank Offering Rate Overnight Index Swap (LIBOR-OIS) spread, 3-month Treasury-Eurodollar (TED) spread, 3-month commercial paper minus 3-month Treasury bill) and 5 other indicators (J.P. Morgan Emerging Markets Bond Index Plus, Chicago Board Options Exchange Market Volatility Index (VIX), Merrill Lynch Bond Market Volatility Index (1-month), 10-year nominal Treasury yield minus 10-year Treasury Inflation Protected Security yield (breakeven inflation rate), Vanguard Financials Exchange-Traded Fund (equities)). For further information, see <http://research.stlouisfed.org/publications/net/NETJan2010Appendix.pdf>.

We follow the standard approach to generate dynamics in the transition probabilities by using exogenous variables such as the VIX or TED spread as the source of time variation (Connolly et al., 2005; Diebold et al., 1994; Schaller and Van Norden, 1997) and to assume a linear specification:

$$\begin{aligned}\pi_{it}^I &= c_i^I + d_i^I x_{t-1} \\ \pi_{it}^{II} &= c_i^{II} + d_i^{II} x_{t-1},\end{aligned}$$

with x_{t-1} the time $t - 1$ value of the exogenous variable. Readers interested in endogenous switching whereby the transition probability depends on x_t rather than x_{t-1} are referred to the works of Filardo (1994) and Kim et al. (2008), requiring an additional model assumption of the dependence between the shocks in x_t and y_{it} .

Like for the volatility, we consider a low and high correlation regime, with $\psi_{*t} = (1 \ 0)'$ in the low correlation regime and $\psi_{*t} = (0 \ 1)'$ in the high correlation regime. P_{*t} is a 2×2 transition matrix for the correlation regimes and $\psi_{*t|t-1} = P_{*t}\psi_{t-1}$. We parameterize the transition matrix using the logit transformation of the time-varying quantities π_{*t}^I and π_{*t}^{II} , with $\pi_{*t}^I = c_*^I + d_*^I x_{t-1}$, $\pi_{*t}^{II} = c_*^{II} + d_*^{II} x_{t-1}$.

3.4 Estimation

The parameters are estimated by maximizing the log-likelihood function:

$$LLH(\theta) = \sum_{t=1}^T \log c_{t|t-1}(F_{1t|t-1}(y_{1t}), \dots, F_{Nt|t-1}(y_{Nt}); \theta_*) + \sum_{i=1}^N \sum_{t=1}^T f_{it|t-1}(y_{it}; \theta_i).$$

Since the joint estimation of all parameters is computationally too demanding, we follow Patton (2006), Jondeau and Rockinger (2006) and Pelletier (2006) in estimating the parameter vector $\theta = (\theta_1, \dots, \theta_N, \theta_*)'$ by a two-step maximum likelihood

procedure, whereby in the first step the parameters pertaining to the marginal distributions are estimated, and in the second step the dependence structure is estimated given the estimated margins.

For the estimation of the margins, the function to be maximized is the log of the expected likelihood of each series :

$$LLH_i(\theta_i) = \sum_{t=1}^T \log \psi'_{it|t-1}(\theta_i) \eta_{it}(\theta_i),$$

with $\eta_{it}(\theta_i)$ the 2-dimensional vector holding the conditional densities under each regime. The conditional probabilities to be in each state $\psi_{it|t-1}(\theta_i)$ are obtained using the usual Hamilton filter:

$$\tilde{\psi}_{it|t} = \frac{\psi_{it|t-1} \odot \eta_{it}}{\iota'(\psi_{it|t-1} \odot \eta_{it})} \quad (3.11)$$

$$\psi_{it+1|t} = P'_{it+1} \tilde{\psi}_{it|t}, \quad (3.12)$$

where \odot denotes element-wise multiplication and ι is a vector of ones.

Maximization of $LLH_i(\theta_i)$ yields $\hat{\theta}_i$. Given $\hat{\theta}_i$, the probability integral transform of y_{it} can then be computed. Denote these for the N series as $\hat{u}_t = (\hat{u}_{1t}, \dots, \hat{u}_{Nt})'$. For each possible value of θ_* , the copula log likelihood function can now be evaluated, using the Hamilton filter to do the inference on the regime probabilities. Maximization of the expected copula log likelihood gives the estimate for the dependence parameter θ_* .

To safeguard the analysis against being trapped in local optima, good starting values were first obtained using a global genetic-type of optimizer called Differential Evolution developed by Price et al. (2006). It combines in each generation three random members to improve the current solution. The first generation is calibrated to a combination of optimized solutions to restricted versions of the model, first

step estimates and some random parameter solutions. Gradient techniques are then used to further improve locally the estimates. Bounds on parameters are indirectly imposed through variable transformations. The implementation and analysis was done in the R environment, using the DEoptim (Ardia et al., 2012), Performance-Analytics (Carl et al., 2012), Rcpp (Eddelbuettel and François, 2011) and xts (Ryan and Ulrich, 2012) packages.

For the estimation of the copula likelihood, we further imposed that the degrees of freedom parameter is the same in the two correlation regimes. Additionally, the optimization method discussed above was implemented inside a loop on the degrees of freedom parameter.

4 Data

Our application is to weekly returns on the largest US headquartered bank holding companies, over January 1 1994 - June 30 2011. For each year, the price data was collected for the fifteen largest bank holding companies, headquartered in the US, in terms of US domestic deposits. The starting year coincides with the first year for which the Federal Deposit Insurance Corporation publishes the yearly report on US domestic deposits as of June 30 of each year on its website.⁷ Table 1 lists the selected bank holding companies and the years for which they belonged to the top 15 of largest deposit holding companies in the US, for at least three consecutive years. Because of missing data, the eventual number of banks per weekly time unit is between 11 and 14. Returns are computed as the weekly log difference of the adjusted price series, downloaded from CRSP, and expressed in percentage points.

We first conduct an exploratory analysis to visualize the time-variation in universe, the volatility and the correlation.

The absolute value of the weekly return series of different length is plotted in the left panel of Figure 7 in the Appendix, together with the sample standard deviation and the single regime volatility estimates under the t-GARCH model of Bollerslev (1987) and the t-GAS model of Creal et al. (2012). Comparing the t-GARCH and t-GAS volatility forecasts, we see that for almost all series, accounting for the thickness of the tails, leads to a lower forecast of the conditional volatility and a reduced sensitivity to extreme returns. There is a large commonality in the volatility dynamics of the different series. Figure 3 reports the time series plot of the weekly cross-sectional mean absolute returns. In that Figure, shaded areas were added to indicate the periods identified by the NBER as economic contractions in the US, namely March 2001-November 2001 and December 2007-June 2009. Additionally,

⁷<http://www2.fdic.gov/sod/index.asp>

Table 1: List of US bank holding companies, together with the first and last year for which they belong to the top 15 of largest deposit banks in the US.

PERMNO	Name	First	End
34746	Fifth Third Bancorp	2001	2011
35044	Regions Financial Corp	2005	2011
36469	First Union Corp, Wachovia Corp	1994	2008
38703	Norwest Corp, Wells Fargo & Co	1994	2011
47079	Citicorp	1994	1998
47159	Fleet Financial Group Inc, Fleet Boston Corp, Fleetboston Financial Corp	1994	2003
47896	Chemical Banking Corp, Chase Manhattan Corp, JP Morgan Chase & Co	1994	2011
49656	Bank of New York Mellon Corp	2008	2011
50024	Wells Fargo & Co (before merger with Norwest)	1994	1997
56232	National City Corp	1996	2008
58827	Bankamerica Corp	1994	1998
59408	Nationsbank Corp, Bankamerica Corp, Bank of America Corp	1994	2011
60442	PNC Bank Corp, PNC Financial Services GRP Inc	1994	2011
61284	Barnett Banks Inc	1994	1997
64995	Keycorp	1994	2011
65138	Bank One Corp	1994	2004
66157	US Bancorp	1998	2011
68144	Suntrust Banks Inc	1994	2011
69032	Morgan Stanley	2009	2011
70519	Citigroup	1999	2011
71563	Southern National Corp NC, BB&T Corp	2000	2011
81055	Capital One Financial Corp	2006	2011

PERMNO is the CRSP identifier.

vertical lines were added to indicate important economic events over the period.⁸

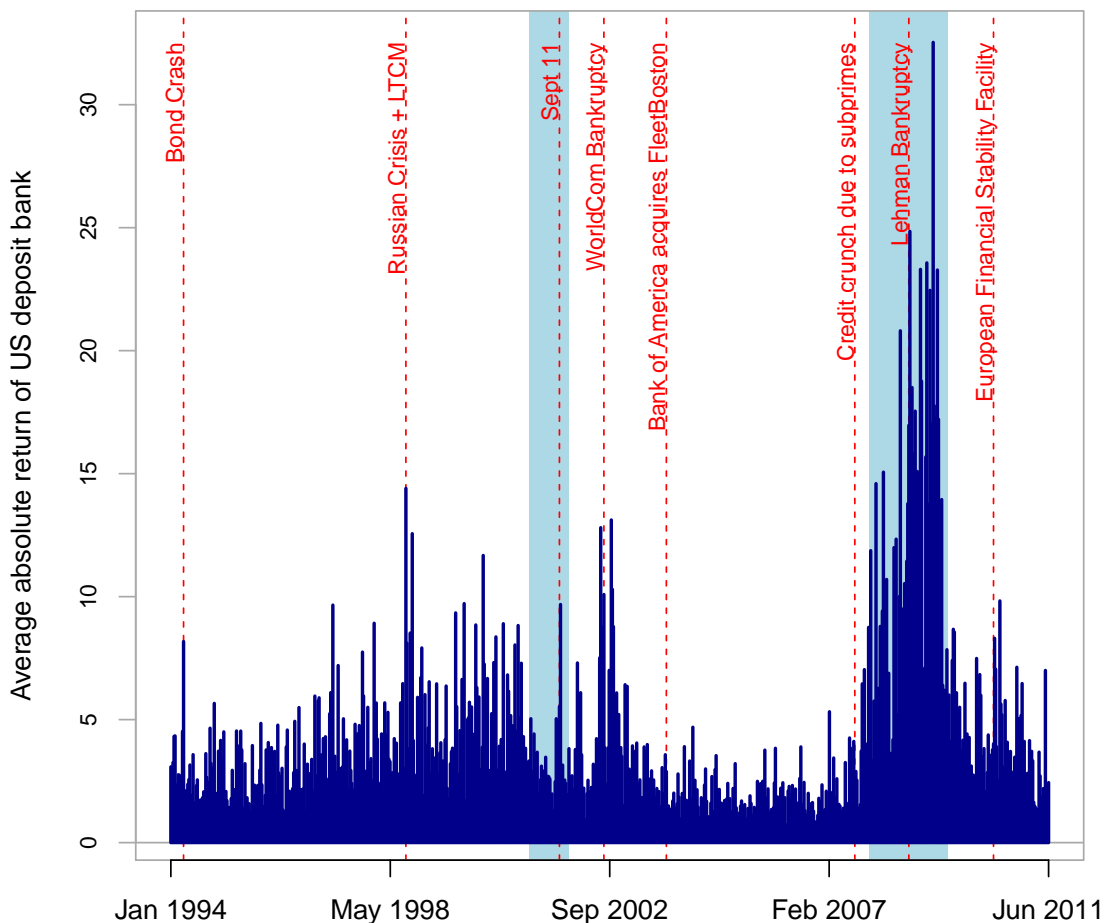
The ratio between the cross-sectional covariance between the returns in the universe and the variance of these returns can be seen as a proxy for the equicorrelation:

$$r_t = \left[\frac{1}{\sum_{i=1}^{N-1} \sum_{j=i+1}^N I_{it} I_{jt}} \sum_{i=1}^{N-1} \sum_{j=i+1}^N y_{it} y_{jt} I_{it} I_{jt} \right] / \left[\frac{1}{\sum_{i=1}^N I_{it}} \sum_{i=1}^N y_{it}^2 I_{it} \right],$$

with I_{it} the dummy variable indicating that bank i belongs to the top 15 of US deposit bank holding firms in year t . The time series of r_t is plotted in the top panel of Figure 4. The realized equicorrelation reveals to be very noisy with little

⁸Bond crash in April 1994, Russian crisis and LTCM in August 1998, September 11 attack in 2001, the WorldCom bankruptcy in August 2002, the acquisition of FleetBoston by Bank of America in October 2003, the Lehman bankruptcy in September 2008 and the creation of the European financial stability facility in May 2010.

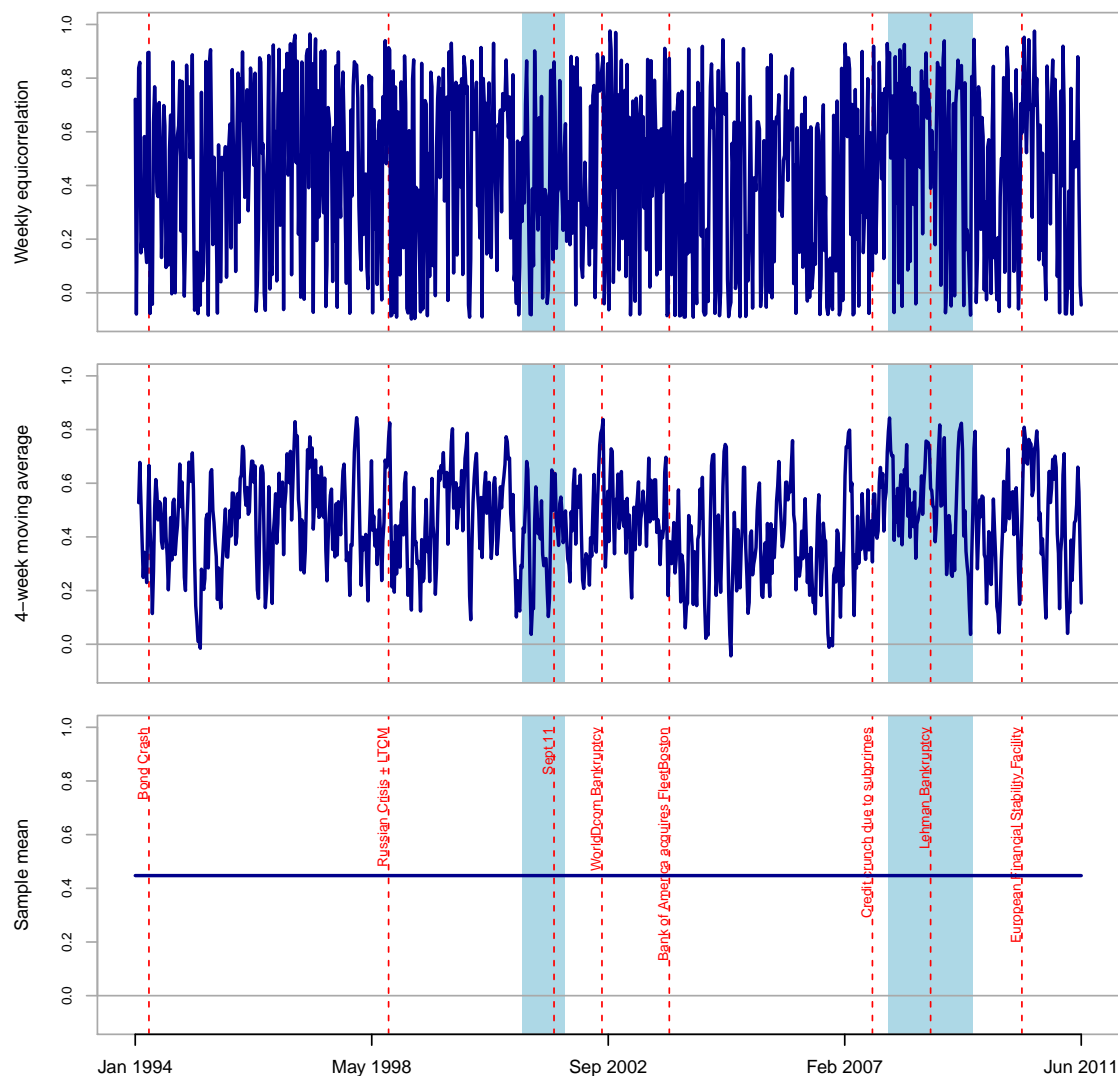
Figure 3: Time series of weekly values of the mean absolute returns across US deposit bank holding companies



persistence. Taking the rolling four-week weekly average shows the dynamics in the equicorrelation in a more clear way. There seems to be an increase in correlation over the 2008 financial crisis period. The average equicorrelation over the period is 44%. There are also relatively large swings in the equicorrelation around the announcement on October 27, 2003 of the acquisition of FleetBoston by Bank of

America.⁹

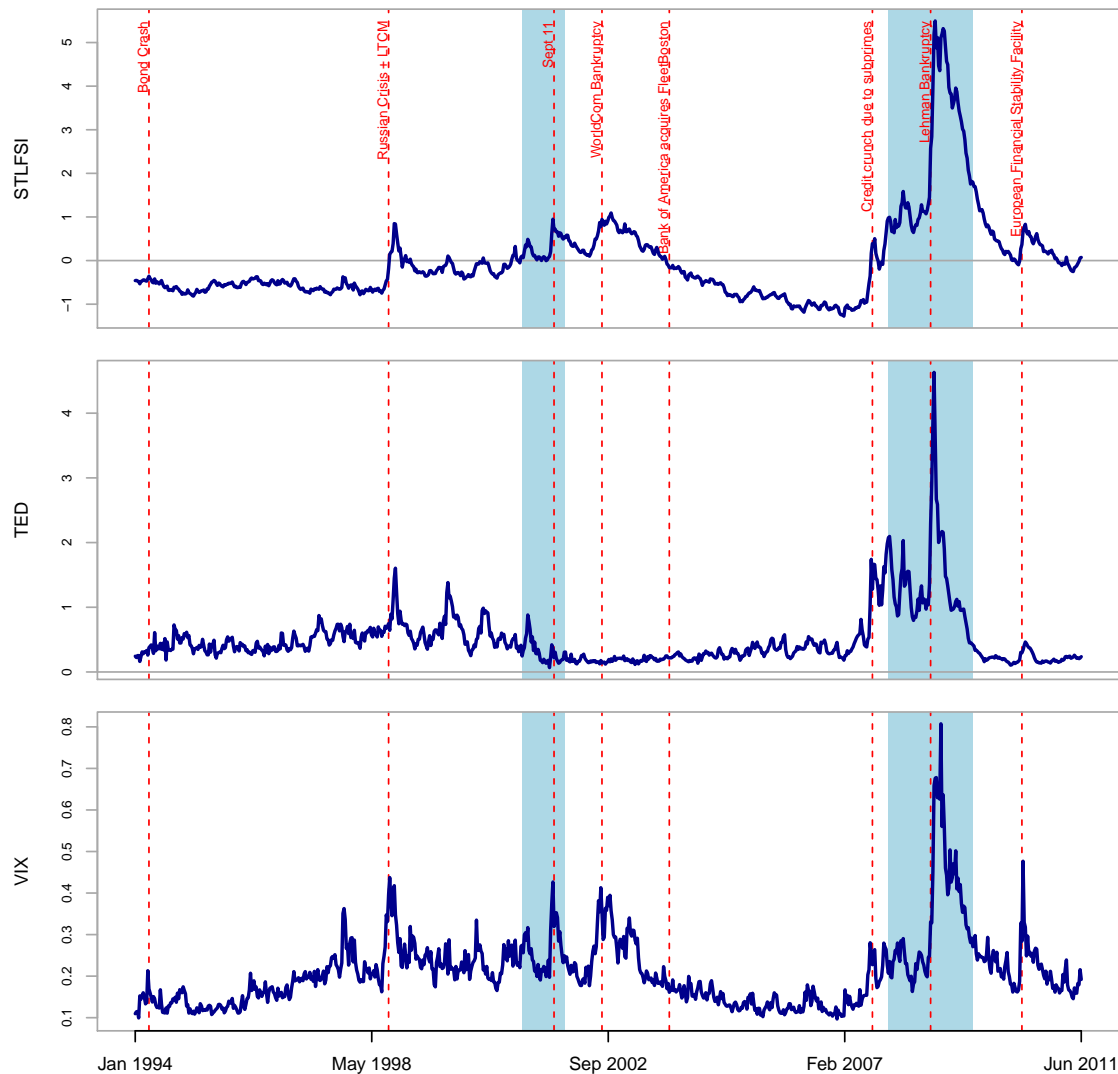
Figure 4: Time series of realized equicorrelations across US deposit bank holding companies, its rolling 4-week average value and the sample average.



Finally, let us inspect the time series plot of the VIX, TED spread and Saint Louis Financial Stability Index (STLFSI) in Figure 5. Comparing the time series of the VIX and TED spread, we see that the TED spread has relatively reacted more to

⁹See, for example, the CNN journal article at http://money.cnn.com/2003/10/27/news/companies/ba_fleet/index.htm

Figure 5: Time series of weekly values of the Saint-Louis Financial Stability Index, the TED spread and the VIX



the 2007-2008 credit crunch following the subprime crisis than the VIX. Correlations between STLFSI and VIX and TED spread are 83% and 56%, respectively, while correlation between VIX and TED spread is 52%.

5 Results

5.1 Analysis of volatility dynamics

For each financial institution we estimate the GARCH and the t-GAS volatility models under the assumption of 1 regime, 2 regimes with constant volatility in each regime, two regime with one regime with constant volatility and another one with dynamic volatility and 2 regimes with dynamic volatility. Regime switching probabilities are either constant or driven by the STLFSI, TED spread or VIX.

For each bank, we selected the “best” model as the one with the lowest value for the Bayesian information criterion (BIC). In the right panel of Figure 7 in the Appendix, we show the volatility forecast under the model with the lowest BIC for each deposit bank.

A first interesting results is that, of all models considered, the lowest BIC is achieved by a double regime volatility model, with time-varying transition probabilities. The STLFSI, TED spread and VIX are selected 6, 6, and 10 times respectively. For shorter return series, at least one of the regimes tends to be characterized by constant volatility. The t-garch model is selected for 8 banks, the t-gas model for 10 banks.

The average BICs (relatively to the BIC of the Gaussian constant volatility model) are in Table 2.¹⁰ The first four lines showing the model fit in the single regime case confirm the stylized fact of fat tails and time-varying volatility in the returns of financial institutions.

The next three lines show the average model fits of using a double regime constant volatility model. In case of constant transition probabilities, the two regime models underperform compared to the the single regime time varying volatility models. But

¹⁰For the univariate models, all BICs were positive. Standardizing is needed to account for the different number of observations.

Table 2: Average model fit (BIC) of univariate volatility models for US deposit banks. The BIC is expressed relatively to the Gaussian constant volatility model. The conditional mean return in each regime is constant. The conditional variance is either constant or time-varying according to the GAS specification.

R1	R2	$v_1 = v_2$	BIC	BIC-STLFSI	BIC-TED	BIC-VIX
t-constant			0.965			
g-GAS			0.933			
t-gas			0.923			
t-GARCH			0.931			
g-constant	g-constant		0.946	0.914	0.898	<u>0.884</u>
t-constant	t-constant		0.947	0.893	0.887	<u>0.832</u>
t-constant	t-constant	YES	0.945	0.88	0.842	<u>0.84</u>
g-gas	g-constant		0.938	<u>0.93</u>	0.939	0.945
t-gas	t-constant		0.941	0.859	0.83	<u>0.8</u>
t-garch	t-constant		0.94	0.855	0.83	<u>0.818</u>
t-gas	t-constant	YES	0.939	0.857	0.829	<u>0.798</u>
t-garch	t-constant	YES	0.939	0.857	0.827	<u>0.814</u>
g-gas	g-gas		0.935	0.885	0.868	<u>0.854</u>
t-gas	t-gas		0.935	0.852	0.825	<u>0.789</u>
t-garch	t-garch		0.945	0.855	0.828	<u>0.788</u>
t-gas	t-gas	YES	0.942	0.862	0.827	<u>0.802</u>
t-garch	t-garch	YES	0.943	0.86	0.829	<u>0.801</u>

The lowest BIC values per column are bolded. For the multiple regime models, the lowest BIC value per row is underlined.

if we allow for time varying models, the BIC is significantly reduced. The lowest average relative BIC is obtained using the VIX as the variables driving the transition probabilities and Student t innovations.

The last ten lines correspond to models with time varying volatility in at least one of the regimes. Assuming constant transition probabilities, the single regime Student t GAS model still has the best model fit. Using the STLFSI or TED spread as a driver for the time-varying transition probabilities, the 2-regime t-GAS model has the lowest BIC. Using the VIX the lowest BIC is obtained using a two regime t-GARCH volatility model, but the difference in BIC with the t-GAS model is negligible.

5.2 Analysis of equicorrelation dynamics

We now turn to the analysis of the dynamics in the equicorrelation parameter of the Student t -copula. We estimated the t-GAS equicorrelation model under the assumption of 1 regime, 2 regimes with constant equicorrelation in each regime, two regime with one regime with constant equicorrelation and another one with dynamic volatility and 2 regimes with dynamic equicorrelation. Regime switching probabilities are either constant or driven by the STLFSI, TED spread or VIX. Based on an initial grid search, the degrees of freedom parameter is set to 100 for all models and regimes.

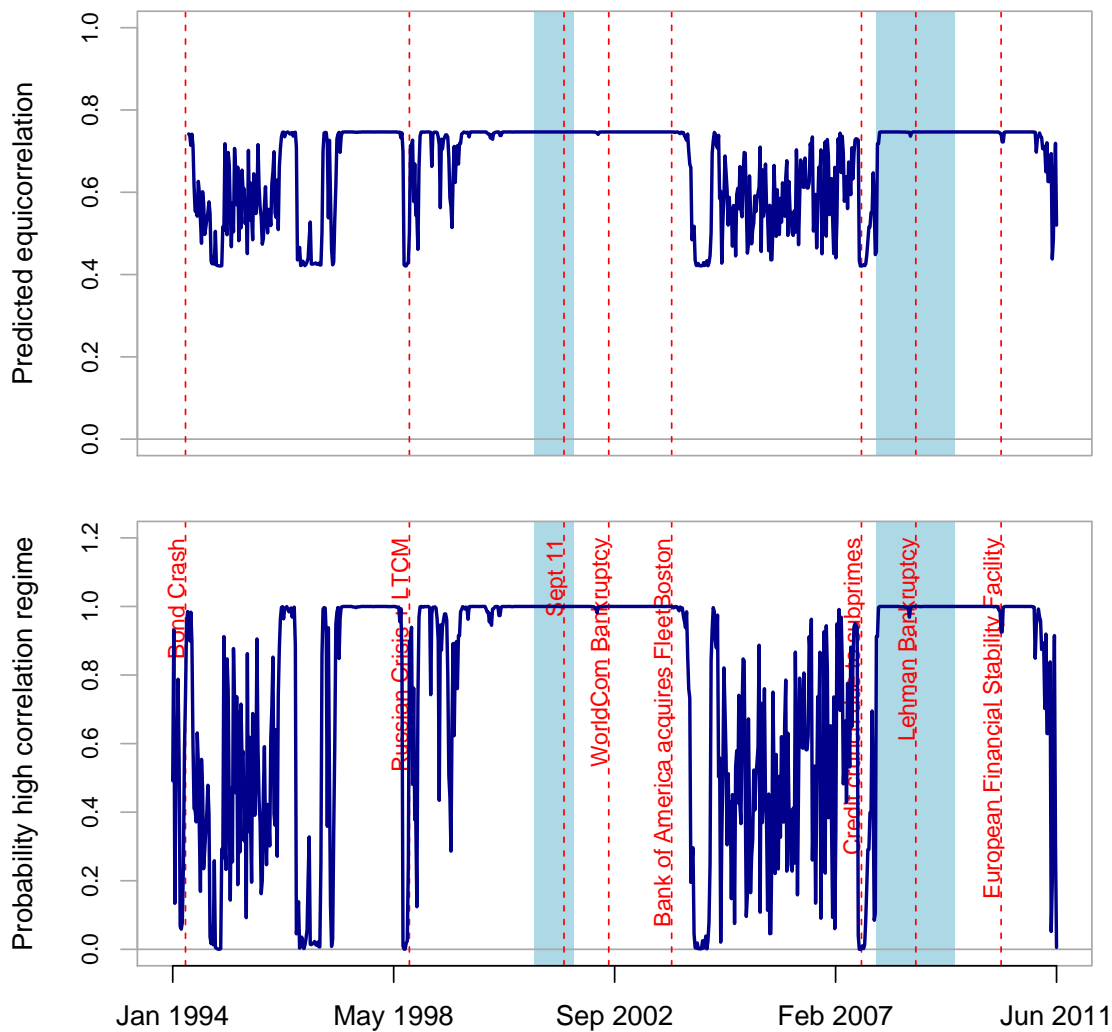
Table 3: BIC associated to the estimated equicorrelation t-copula for US deposit banks. The equicorrelation parameter is either constant or time-varying according to the GAS specification.

R1	R2		STLFSI	TED	VIX
t-constant		24036.69			
t-gas		24047.21			
t-constant	t-constant	23691.31	23127.65	23101.59	<u>22788.43</u>
t-gas	t-constant	23704.71	23144.48	23114.93	<u>22739.22</u>
t-gas	t-gas	23718.00	23160.06	23128.42	<u>22816.05</u>

The lowest BIC values per column are bolded. For the multiple regime models, the lowest BIC value per row is underlined.

Table 3 reports the BIC associated to those equicorrelation t-copula models. All models without time-varying transition probabilities underperform compared to the constant equicorrelation model. There does not seem to be much to gain from modeling the within-regime dynamics, which is in support of the regime switching constant correlation model of Pelletier (2006), but with time-varying transition probabilities. The best model is a two-regime equicorrelation model with time-variation driven by the VIX and (an almost negligible) time-varying correlation in the low correlation regime. The corresponding predicted weekly equicorrelation parameter

Figure 6: Time series of dynamic equicorrelation parameter under the VIX driven two-regime constant correlation t-copula model (upper plot) and the probability to be in the high correlation regime (lower plot).



is plotted in Figure 6. We see that the estimated equicorrelation fluctuates between 42% and 75% and that the likelihood of being in the high correlation regime tends to be high when the VIX is relatively high.

6 Conclusion

In spite of ample theoretical and empirical evidence in support of regime switching in both the macro economy and financial markets, standard, non-switching, volatility models, like the GARCH family, remain dominant in practical use. This means that such models are likely to fail when they are perhaps most needed, at the time of a transition between between a low risk and high risk regime. This motivates us to propose a regime switching volatility-correlation model to to predict the volatility and correlation of financial assets. The within-regime dynamics of volatility and correlation are driven by the score of the density function, while state variables such as the VIX and TED spread affect the transition probabilities between volatility and correlation regimes.

The model is applied to a time-varying universe of US deposit bank holding companies, over 1994 - 2011. We find strong evidence of time-variation in the regime switching probabilities and the within-regime volatility of most banks, while the within-regime dynamics of the equicorrelation seem to be constant over the period.

Several topics stand out as interesting avenues for further research. A first one relates to the use of US deposit bank balance sheet variables as a driver for the transition probabilities, and in particular the banks' leverage. A model replicating the joint dependence between balance sheet capacity, volatility and risk premium was recently proposed by Danielsson et al. (2011). Leverage is also a key variable in the systemic risk calculation method proposed by Brownlees and Engle (2011). Secondly, the model could be generalized, by allowing for endogenous regime switching as in Filardo (1994) and Kim et al. (2008), or considering other distributions. Through a skewed distribution, leverage effects could be introduced in the within regime

volatility dynamics, as in Ardia (2009). Finally, the proposed model does not allow for spillover effects between the volatility dynamics of the two regimes. This has the computational advantage that the conditional volatility predictions in each regime do not depend on the path of the volatility of the other regime. But other choices are possible, as in Gray (1996) or Klaassen (2002).

Appendix on GAS models

1. The Generalized Autoregressive Score framework in Creal et al. (2012)

Recall that we denote $f_{t|t-1}(y_t; \lambda_t, \theta)$ the conditional observation density and suppose there is no regime switching such that the conditional variances and the copula correlation coefficient are the only time-varying parameters, which we generically denote by λ_t . Creal et al. (2012) recommend to use the score to drive the time-variation in the parameter vector λ_t , since the score defines the steepest ascent direction for improving the model's local fit in terms of the likelihood at time t given the current position of the parameter λ_t . In determining the magnitude of the parameter update, Creal et al. (2012) recommend an autoregressive specification, as well as using a scaled version of the score. The GAS model of order 1 for λ_t is then given by:

$$\lambda_t = \omega + A s_{t-1}(\lambda_{t-1}, \theta) + B \lambda_{t-1} \quad (6.1)$$

$$s_t(\lambda_t, \theta) = S(\lambda_t; \theta) \cdot \nabla_t(\lambda_t, \theta) \quad (6.2)$$

$$\nabla_t(\lambda_t, \theta) = \partial \log f_{t|t-1}(y_t; \lambda_t, \theta) / \partial \lambda_t, \quad (6.3)$$

where ω is a vector of constants, A and B are coefficient matrices and $S(\lambda_{t-1}; \theta)$ is a scaling matrix. Creal et al. (2012) recommend to scale the score using a power of the variance of the score:

$$S_t^k = 1 / \{E_{t-1}[(\nabla_t(\lambda_t, \theta))(\nabla_t(\lambda_t, \theta))']\}^d, \quad (6.4)$$

with $E_{t-1}[\cdot]$ the conditional expectation operator with the information available at time $t-1$ as information set. Several choices of powers are considered by the authors: $d=0$ correspond to a steepest ascent step, $d=1$ can be associated to Gauss-Newton updating, while $d=1/2$ appears in the work of Nelson and Foster (1994) as asymptotically optimal in some cases.

This model was applied by Creal et al. (2011) to model the conditional covariance matrix in a single regime case with four assets. A direct application of this approach to the universe of 15 largest US deposit banks is computationally infeasible, because of the curse of dimensionality this model faces. These could be partly solved by imposing parameter restrictions, such as diagonality of the matrices A and B , but the path dependence of the score then still remains a challenging issue in the multiple regime case. In this paper, we opt to circumvent this problem by using the regime-specific score to drive the parameters of the corresponding regime.

2. The regime-switching t -GAS volatility model

The parameter of interest is h_{it}^k . The score of the standardized student t density function of volatility regime k in (3.6) with respect to h_{it}^k is:

$$\nabla_{it}^k = \frac{\partial \log t_{\nu_i^k}(y_{it} | \mu_i^k, h_{it}^k)}{\partial h_{it}^k} = \frac{\nu_i^k + 1}{2} \frac{1}{(\nu_i^k - 2) + (y_{it} - \mu_i^k)^2 / h_{it}^k} (y_{it} - \mu_i^k)^2 (h_{it}^k)^{-2} - \frac{1}{2h_{it}^k}.$$

We have that $E_{t-1}[\nabla_{it}^k | s_{it} = k; \mu_i^k, h_{it}^k] = 0$. Conditionally on $s_{it} = k$, $(\nu_i^k / (\nu_i^k - 2))(y_{it} - \mu_i^k)^2 / h_{it}^k$ is $F(1, \nu_i^k)$ distributed. Hence, as noted by Harvey and Chakravarty (2008), the score can be rewritten as

$$\nabla_{it}^k = \frac{1}{2h_{it}^k} [(\nu_i^k + 1)b_{it}^k - 1], \quad b_{it}^k = \frac{\frac{\nu_i^k}{\nu_i^k - 2} \frac{(y_{it} - \mu_i^k)^2}{h_{it}^k}}{\nu_i^k + \frac{\nu_i^k}{\nu_i^k - 2} \frac{(y_{it} - \mu_i^k)^2}{h_{it}^k}}$$

with b_{it}^k a random variable that conditionally on $s_{it} = k$ has a beta distribution of the first kind with shape parameters $1/2$ and $\nu_i^k/2$. The conditional expectation and variance of b_{it}^k are $1/(\nu_i^k + 1)$ and $2\nu_i^k / [(\nu_i^k + 1)^2(\nu_i^k + 3)]$, respectively. Hence, $E_{t-1}[(\nabla_{it}^k)^2 | s_{it} = k; \mu_i^k, h_{it}^k] = ((h_{it}^k)^2/2)\nu_i^k / (\nu_i^k + 3)$.

Using the asymptotic variance to standardize the score gives the following update equation for the within regime variance when $s_t = k$:

$$h_{it}^k = \omega_i^k + \alpha_i^k \left((1 + 3/\nu_i^k) \frac{\nu_i^k + 1}{[\nu_i^k - 2] + [y_{it-1} - \mu_i^k]^2 / h_{it-1}^k} (y_{it-1} - \mu_i^k)^2 - 3h_{it-1}^k / \nu_i^k \right) + \tilde{\beta}_i^k h_{it-1}^k, \quad (6.5)$$

with ω_i^k , α_i^k and $\tilde{\beta}_i^k$ time invariant parameters. This is equivalent to the proposed variance equation in (3.4) by setting $\beta_i^k = \tilde{\beta}_i^k - 3\alpha_i^k / \nu_i^k$.

3. The regime-switching t -GAS correlation model

The parameter of interest is ρ_t^k . The score of the t -copula function when $s_{*t} = k$ is:

$$\begin{aligned} \nabla_t^k &= \frac{\partial \log c_{t|t-1}(u_t, \nu_{*t}^k, R_t^k)}{\partial q_t^k} \\ &= \left[-\frac{N + \nu_*^k}{2} \frac{1}{\nu_*^k - 2 + (\tilde{y}_t^k)'(R_t^k)^{-1}(\tilde{y}_t^k)} \frac{\partial(\tilde{y}_t^k)'(R_t^k)^{-1}(\tilde{y}_t^k)}{\partial \rho_t^k} - \frac{1}{2} \frac{\partial \log \det R_t^k}{\partial \rho_t^k} \right] \frac{\partial \rho_t^k}{\partial q_t^k}. \end{aligned} \quad (6.6)$$

To derive a more explicit formula for the score, we use the intermediary result that:

$$\frac{\partial(\tilde{y}_t^k)'(R_t^k)^{-1}(\tilde{y}_t^k)}{\partial \rho_t^k} = -(c_t^k)^2 \left[b_t^k \sum_{i=1}^N \sum_{j \neq i} \tilde{y}_{it}^k \tilde{y}_{jt}^k + a_t^k \sum_{i=1}^N (\tilde{y}_{it}^k)^2 \right] \quad (6.7)$$

$$\frac{\partial \log \det(R_t^k)}{\partial \rho_t^k} = (c_t^k)^2 [\rho_t^k b_t^k + a_t^k] (N - 1)N, \quad (6.8)$$

where $a_t^k = -\rho_t^k(2 + \rho_t^k(N - 2))$, $b_t^k = (1 + (\rho_t^k)^2(N - 1))$ and $c_t^k = 1 / [(1 + (N - 1)\rho_t^k)(1 - \rho_t^k)]$. To obtain these results, we use standard matrix differential calculus¹¹ to rewrite: $\frac{\partial \log \det(R_t)}{\partial \rho_t} = \text{tr} \left[(R_t^k)^{-1} \frac{\partial R_t^k}{\partial \rho_t^k} \right]$ and $\frac{\partial(\tilde{y}_t^k)'(R_t^k)^{-1}(\tilde{y}_t^k)}{\partial \rho_t^k} = -\text{tr} \left[\tilde{y}_t^k (\tilde{y}_t^k)' (R_t^k)^{-1} \frac{\partial R_t^k}{\partial \rho_t^k} (R_t^k)^{-1} \right]$. Since $R_t^k = (1 - \rho_t^k)I_N + \rho_t^k J_N$, $\partial R_t^k / \partial \rho_t^k = -I_N + J_N$ and $(R_t^k)^{-1} = c_t^k [a_t^k I_N - \rho_t^k J_N]$. Since

¹¹For any conformable matrices X and e , we have that: $d \log \det(X) = \text{tr}(X^{-1}dX)$ and $d(e'X^{-1}e) = -\text{tr}(ee'X^{-1}dXX^{-1}) + 2X^{-1}ede$ (Magnus and Neudecker, 1999)

$JJ = NJ$, we further have:

$$\begin{aligned} (R_t^k)^{-1} \frac{\partial R_t^k}{\partial \rho_t^k} &= c_t^k [a_t^k (J_N - I_N) - \rho_t^k (N - 1)J], \\ (R_t^k)^{-1} \frac{\partial R_t^k}{\partial \rho_t^k} (R_t^k)^{-1} &= (c_t^k)^2 [(a_t^k)^2 (J_N - I_N) + ((\rho_t^k)^2 (N - 1)N - a_t^k \rho_t^k 2(N - 1))J_N] \\ &= (c_t^k)^2 [-(a_t^k)^2 I_N + (1 + (\rho_t^k)^2 (N - 1))J_N]. \end{aligned}$$

Taking the trace of these matrices leads to the expression in (6.7)-(6.8).

Combining (6.6) with (6.7)-(6.8) yields:

$$\nabla_t^k = \frac{1}{2} (c_t^k)^2 (N - 1)N \left[b_t^k \left(\frac{w_t^k}{(N - 1)N} \sum_{i=1}^N \sum_{j \neq i} \tilde{y}_{it}^k \tilde{y}_{jt}^k - \rho_t^k \right) + a_t^k \left(\frac{w_t^k}{N} \sum_{i=1}^N \tilde{y}_{it}^2 - 1 \right) \right] \frac{\partial \rho_t^k}{\partial q_t^k}, \quad (6.9)$$

with $w_t^k = (N + \nu_*^k) / (\nu_*^k - 2 + (\tilde{y}_t^k)' (R_t^k)^{-1} \tilde{y}_t^k)$.

We will use the square root of the conditional variance of the score of the Student t copula in regime k to standardize the corresponding score. To derive this conditional variance, we first rewrite the score (6.9) in matrix notation:

$$\nabla_t^k = \frac{1}{2} (c_t^k)^2 (N - 1)N \frac{\partial \rho_t^k}{\partial q_t^k} \iota' A_t^k [w_t^k \text{vec}(\tilde{y}_t^k (\tilde{y}_t^k)') - \text{vec}(R_t^k)],$$

with ι a $N^2 \times 1$ vector of ones, A_t^k a $N^2 \times N^2$ diagonal matrix with element $(i - 1)N + i$ equal to a_t^k (for $i = 1, \dots, N$) and b_t^k otherwise. Conditional on $s_{*t} = k$, $(R_t^k)^{-1/2} \tilde{y}_t^k$ follows a Student t distribution with mean 0, covariance matrix I and ν_*^k degrees of freedom. It follows from the proof of Theorem I in Creal et al. (2011) that the conditional variance of ∇_t^k when $s_{*t} = k$ is given by:

$$S_t^k = \frac{1}{4} (c_t^k)^4 (N - 1)^2 N^2 \left(\frac{\partial \rho_t^k}{\partial q_t^k} \right)^2 \iota' A_t^k J_t^k [g^k G - \text{vec}(I) \text{vec}(I)'] (J_t^k)' (A_t^k)' \iota, \quad (6.10)$$

where $J_t^k = (R_t^k)^{1/2} \otimes (R_t^k)^{1/2}$, $g^k = (\nu_*^k + N) / (\nu_*^k + 2 + N)$ for the Student t and the element $G[\cdot, \cdot]$ of the matrix G is given by

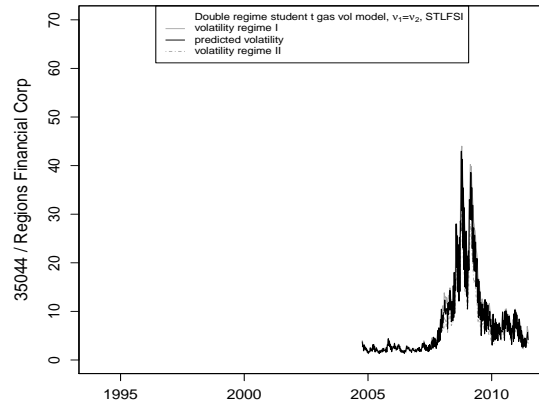
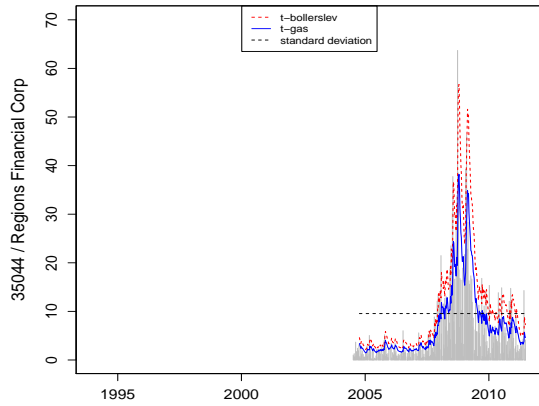
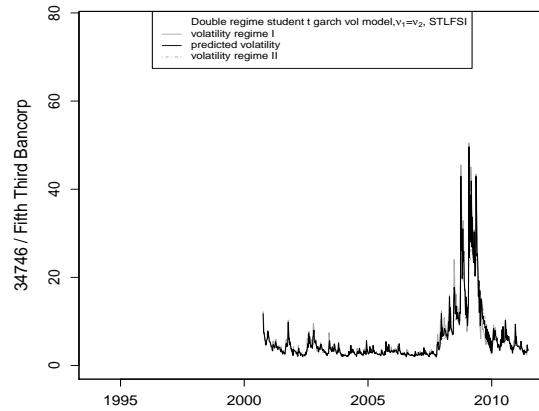
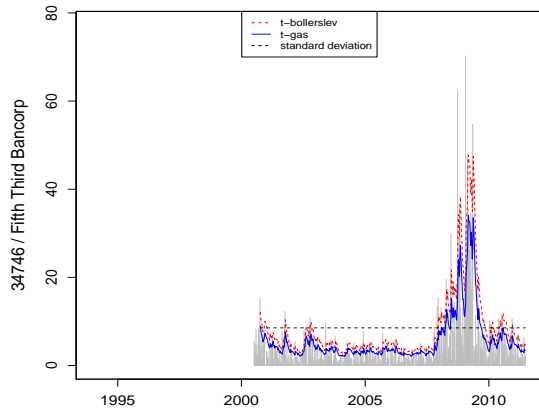
$$G[(i - 1)N + l, (j - 1)N + m] = \delta_{ij} \delta_{lm} + \delta_{il} \delta_{jm} + \delta_{im} \delta_{jl},$$

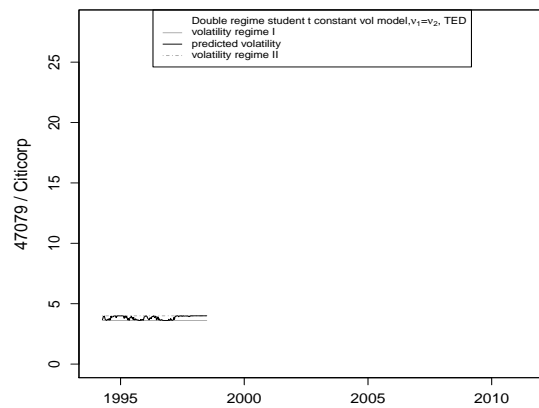
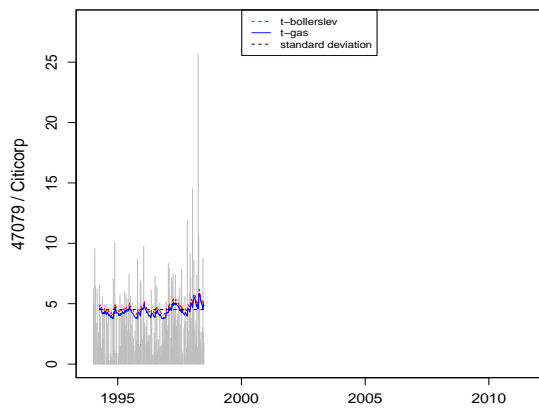
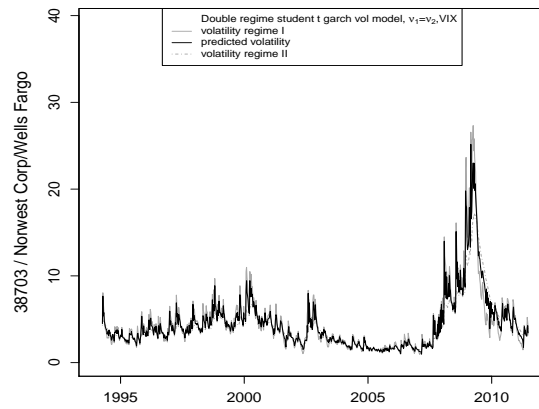
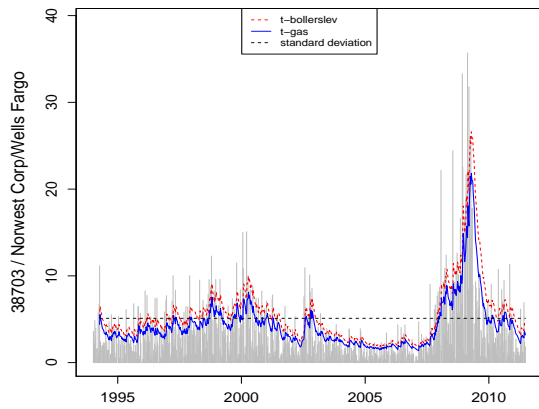
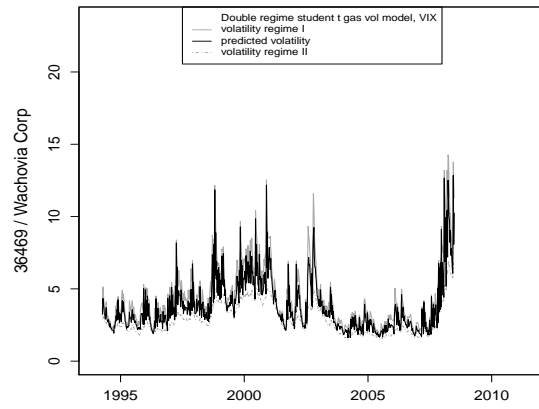
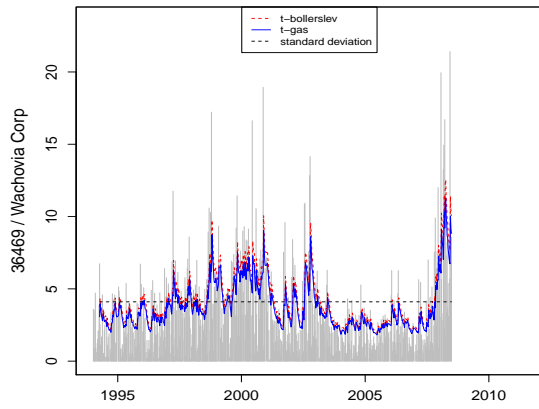
for $i, j, l, m = 1, \dots, N$ and where Kronecker delta δ_{ij} is unity when $i = j$ and 0 otherwise.

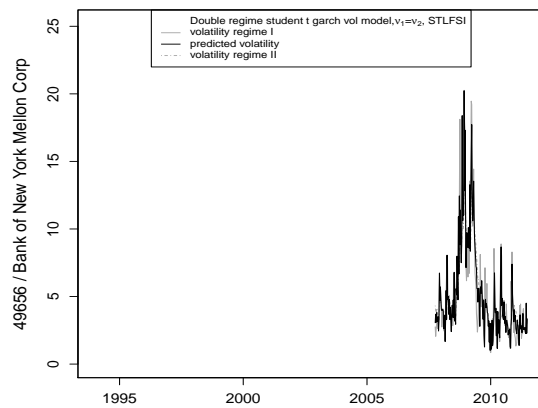
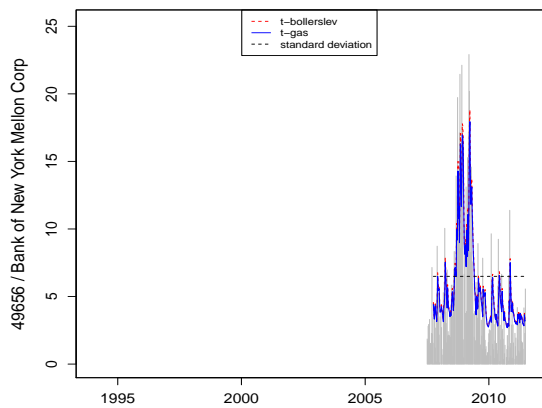
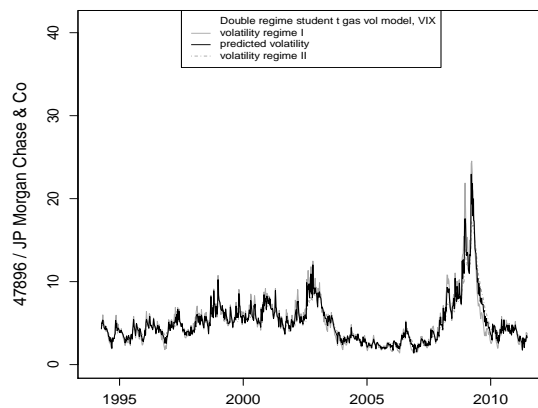
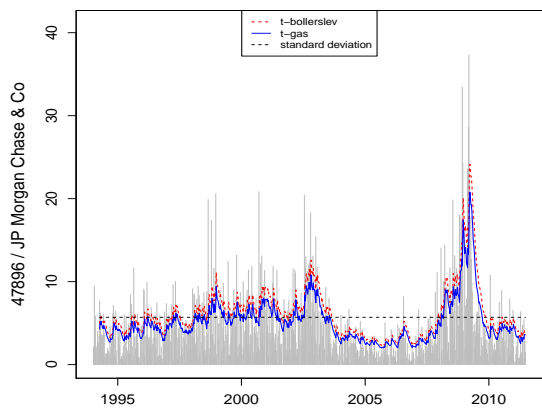
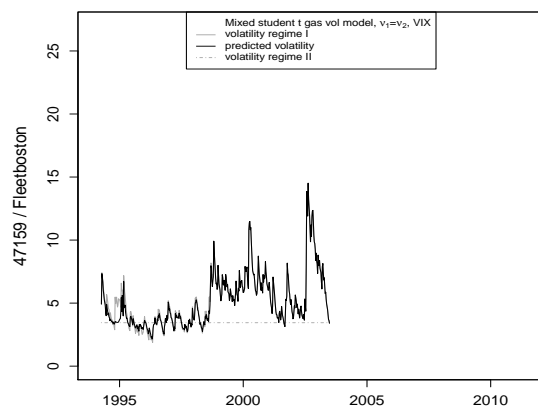
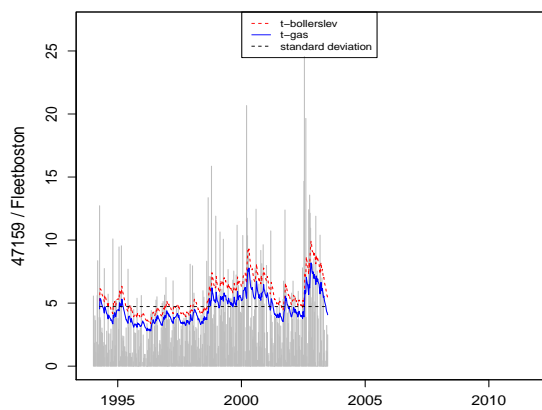
Note that for $\rho_t^k = 0$ we have $\iota' A_t^k G (A_t^k)' \iota = N((2 + N)(a_t^k)^2 + 2(N - 1)(b_t^k)^2)$ and $\iota' A_t^k \text{vec}(I) \text{vec}(I)' (A_t^k)' \iota = N^2 (a_t^k)^2$. Unfortunately, there does not seem to be an explicit expression available for $R_t^{1/2}$ for general N and ρ_t^k . To avoid having to use Cholesky decompositions or other methods to calculate $(R_t^k)^{1/2}$ in the likelihood functions, we approximate $\iota' A_t^k J_t^k G (J_t^k)' (A_t^k)' \iota$ and $\iota' A_t^k J_t^k \text{vec}(I) \text{vec}(I)' (J_t^k)' (A_t^k)' \iota$ with the fit of a piecewise third order polynomial regression of these values on ρ_t^k .

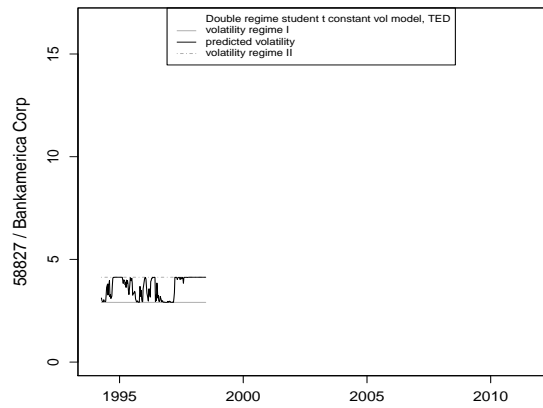
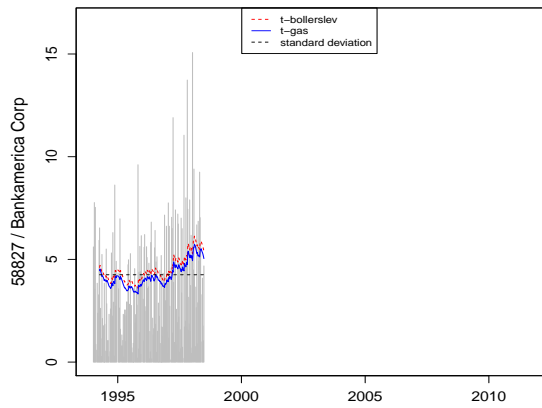
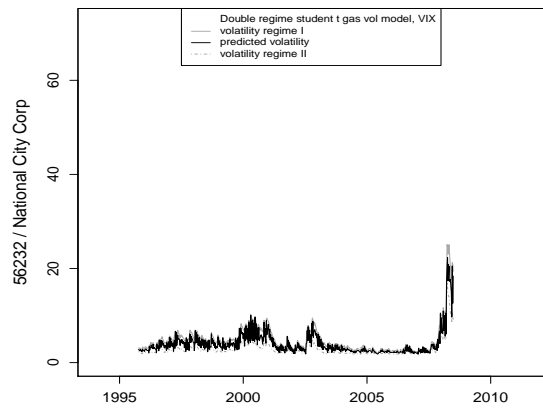
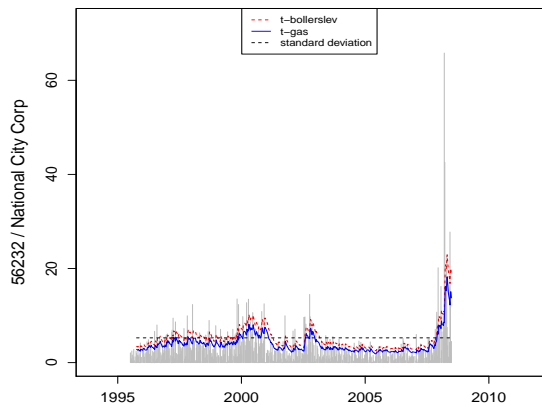
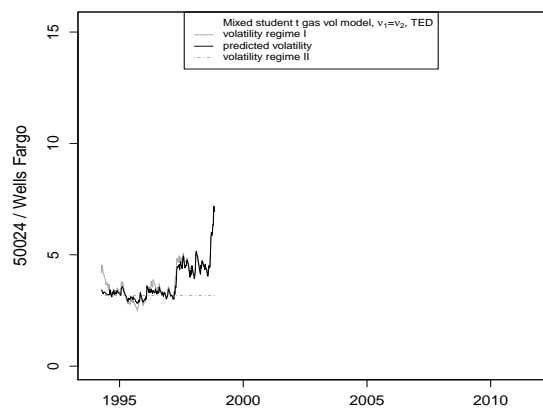
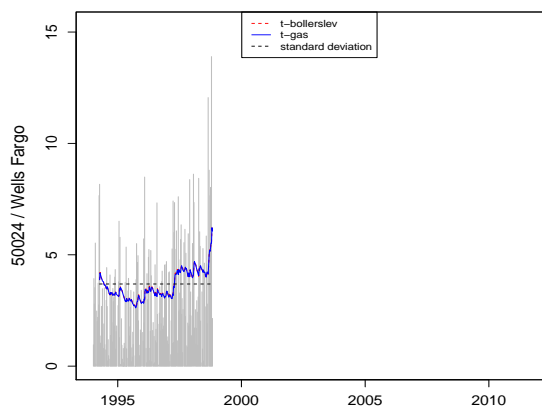
Appendix with additional figures

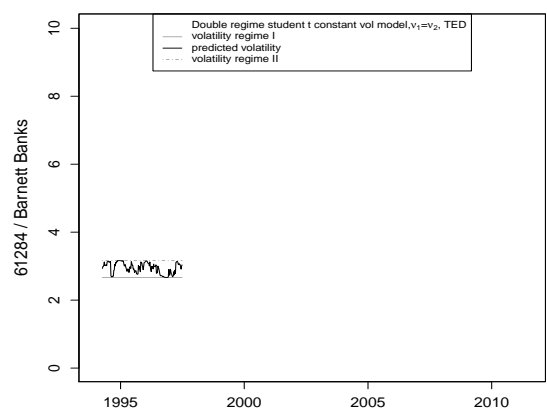
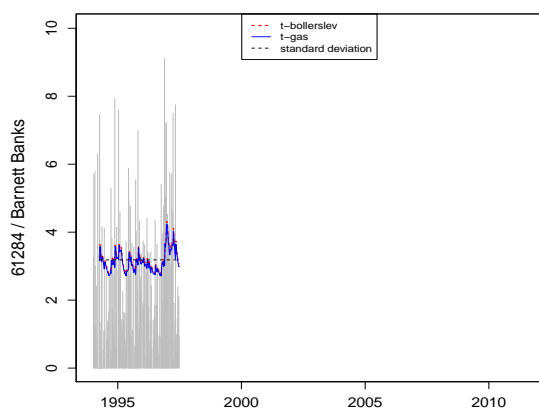
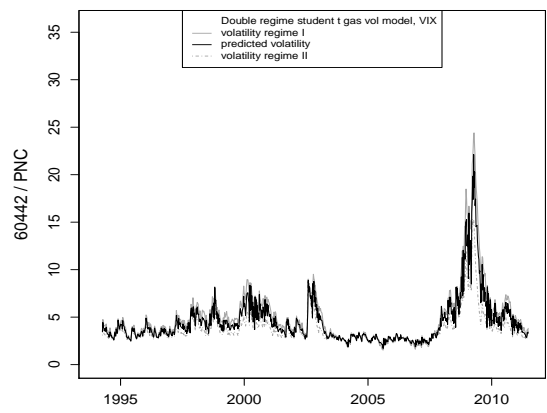
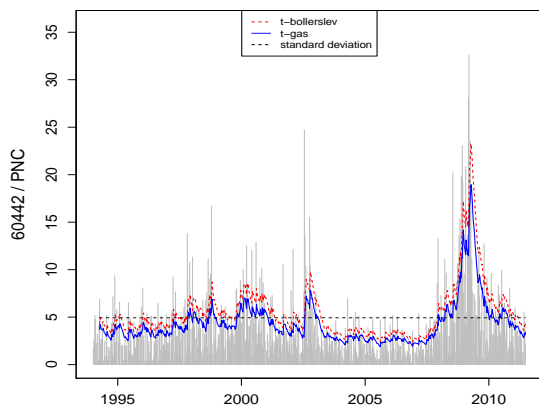
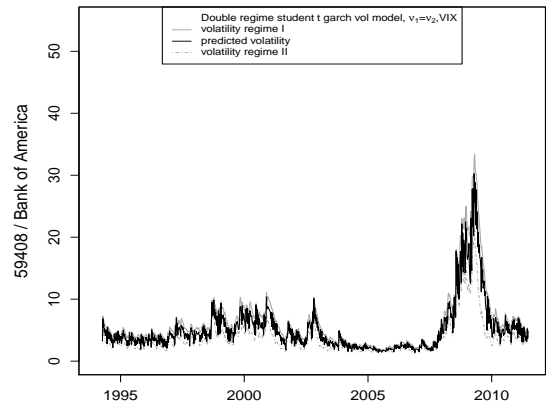
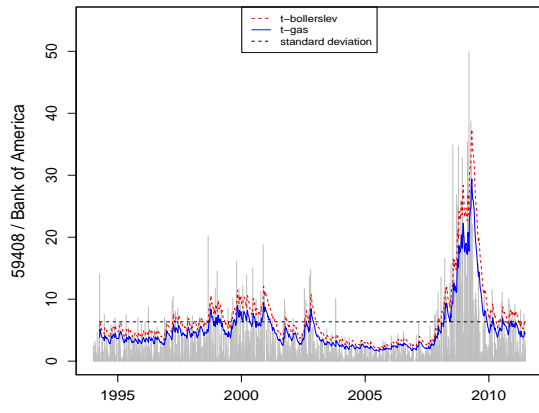
Figure 7: Left panel shows the time series of absolute weekly stock returns of US deposit banks, together with the sample standard deviation and the single regime volatility estimates under the t-GARCH model of Bollerslev (1986) and the t-GAS model of Creal et al. (2012). Right panel reports the volatility estimates under the model with lowest BIC.

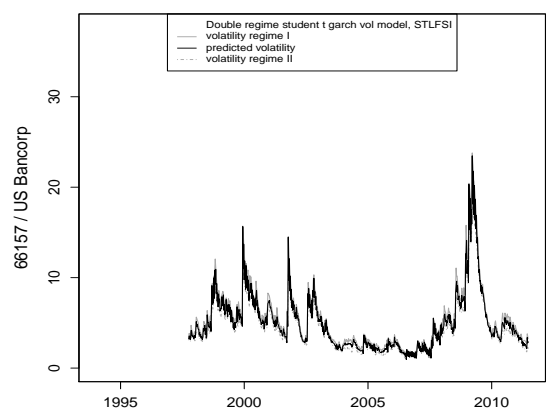
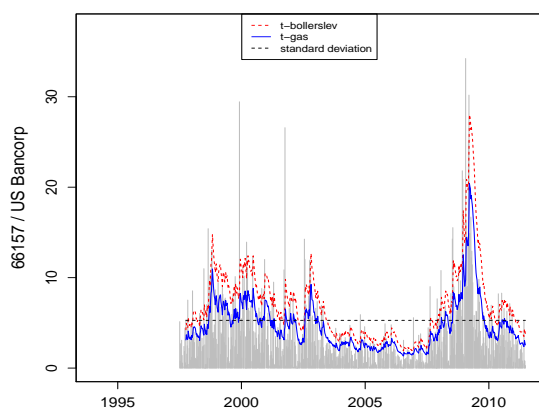
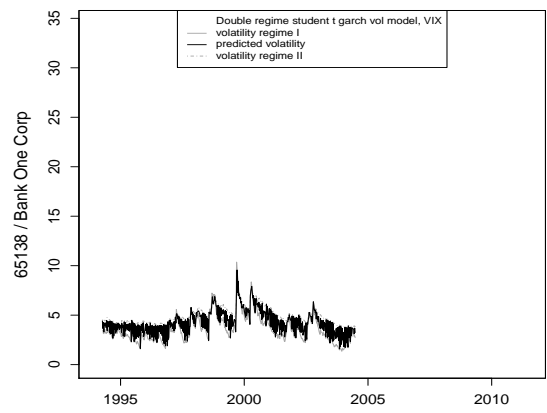
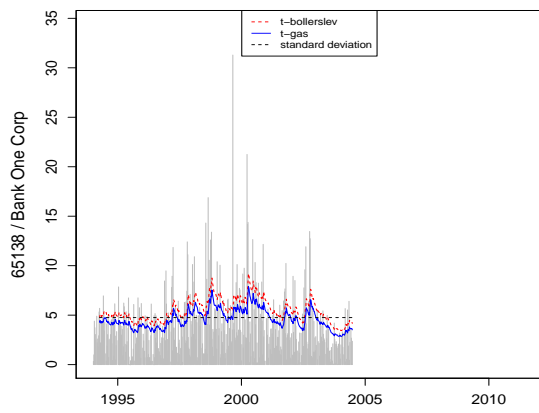
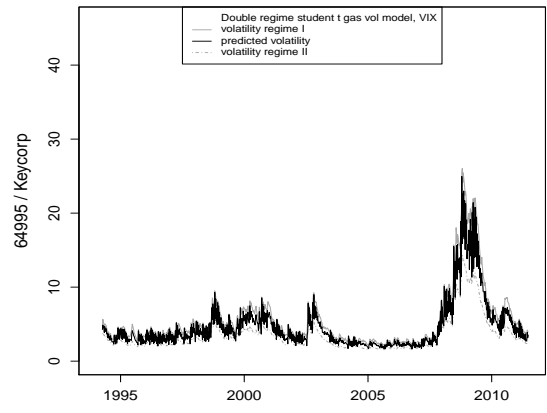
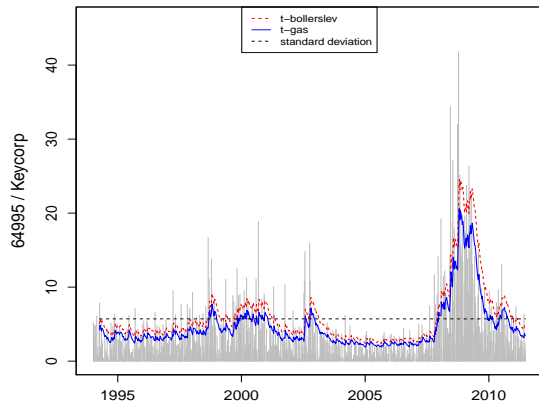


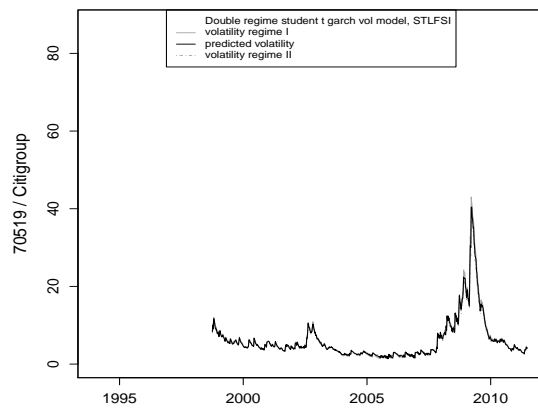
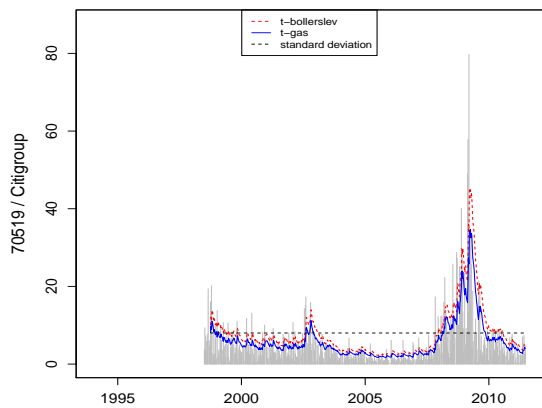
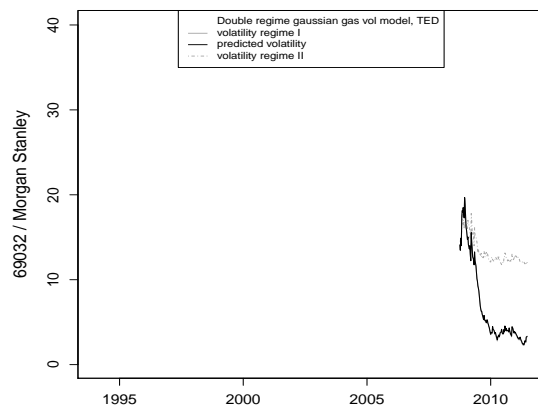
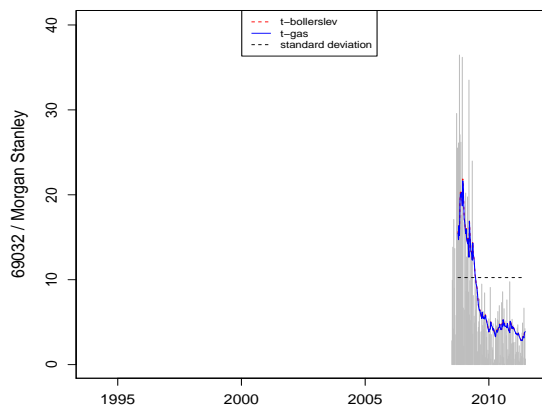
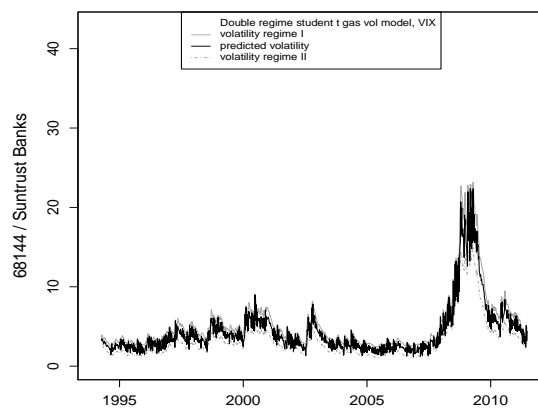
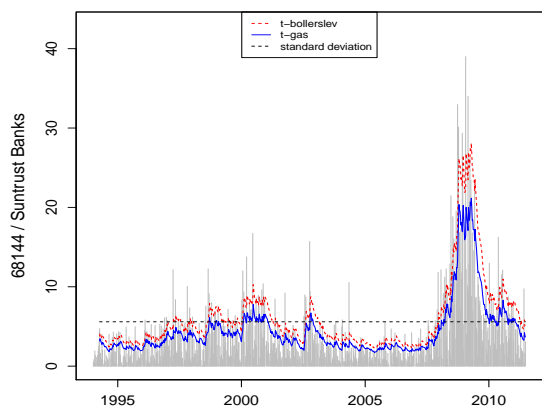


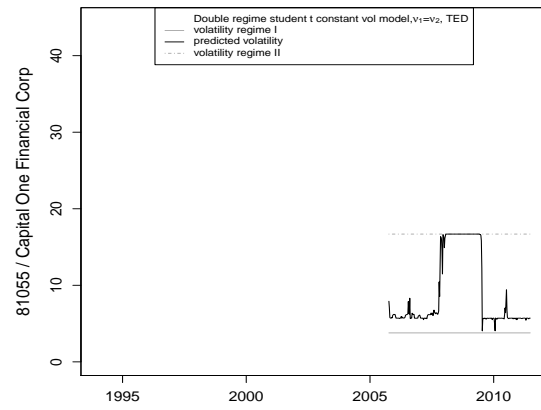
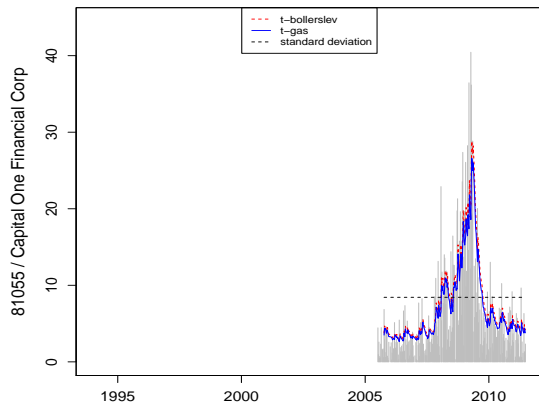
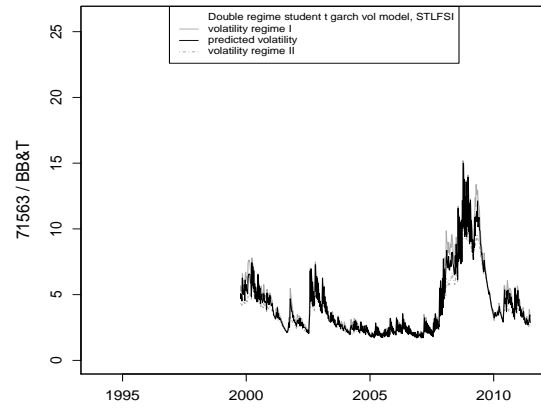
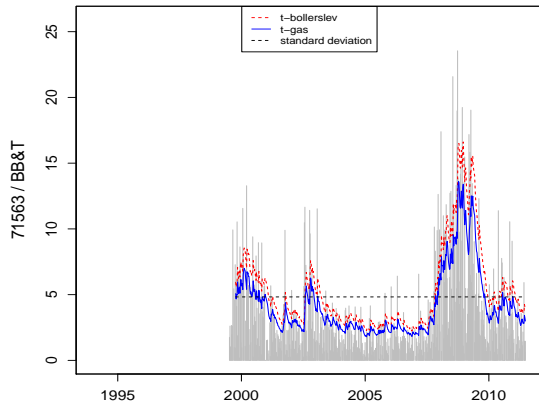












References

- Adrian, T. and H. S. Shin (2010). Liquidity and leverage. *Journal of Financial Intermediation* 19, 418–437.
- Allen, F. and D. Gale (2000). Bubbles and crises. *Economic Journal* 110, 236–255.
- Allen, F. and G. Gorton (1993). Churning bubbles. *Review of Economic Studies* 60, 813–836.
- Ang, A. and J. Chen (2002). Asymmetric correlations of equity portfolios. *Journal of Financial Economics* 63, 443–494.
- Ardia, D. (2009). Bayesian estimation of a markov-switching threshold asymmetric GARCH model with Student- t innovations. *Econometrics Journal* 12, 105–126.
- Ardia, D., K. M. Mullen, B. G. P. Peterson, and J. Ulrich (2012). DEoptim: Differential evolution in R. version 2.2-0.
- Bollerslev, T. (1986). Generalized autoregressive conditional heteroskedasticity. *Journal of Econometrics* 31, 307–327.
- Bollerslev, T. (1987). A conditionally heteroskedastic time series model for speculative prices and rates of return. *Review of Economics and Statistics* 69, 542–547.
- Boudt, K. and C. Croux (2010). Robust M-estimation of multivariate GARCH models. *Computational Statistics and Data Analysis* 54, 2459–2469.
- Boudt, K., J. Daniélfsson, and S. Laurent (2012). Robust forecasting of dynamic conditional correlation GARCH models. *International Journal of Forecasting*, forthcoming.
- Brownlees, C. and R. Engle (2011). Volatility, correlation and tails for systemic risk measurement. *Working paper*.
- Brunnermeier, M. K. and L. H. Pedersen (2009). Market Liquidity and Funding Liquidity. *Review of Financial Studies* 22(6), 2201–2238.
- Campbell, R., C. Forbes, K. Koedijk, and P. Kofman (2008). Increasing correlations or just fat tails? *Journal of Empirical Finance* 15, 287–309.
- Carl, P., B. G. Peterson, K. Boudt, and E. Zivot (2012). *PerformanceAnalytics: Econometric tools for performance and risk analysis*. R package version 1.0.4.4.
- Connolly, R., C. Stivers, and L. Sun (2005). Stock market uncertainty and the stock-bond return relation. *Journal of Financial and Quantitative Analysis* 40, 161–194.
- Creal, D., S. Koopman, and A. Lucas (2011). A dynamic multivariate heavy-tailed model for time-varying volatilities and correlations. *Journal of Business Economics and Statistics* 29, 552–563.

- Creal, D., S. Koopman, and A. Lucas (2012). Generalized autoregressive score models with applications. *Journal of Applied Econometrics*, forthcoming.
- Danielsson, J. (2011). Risk and crises. *VoxEU.org* 18 February.
- Danielsson, J. and H. Shin (2003). *Modern Risk Management: A History*, Chapter Endogenous Risk. Risk Books.
- Danielsson, J., H. S. Shin, and J.-P. Zigrand (2011). Balance sheet capacity and endogenous risk. *Working paper*.
- Diebold, F., J. Lee, and G. Weinbach (1994). *Time Series Analysis and Cointegration*, Chapter Regime Shifting with Time-Varying Transitions Probabilities.
- Dueker, M. (1997). Markov switching in GARCH processes and mean-reverting stock-market volatility. *Journal of Business and Economic Statistics* 15, 26–34.
- Eddelbuettel, D. and R. François (2011). Rcpp: Seamless R and C++ integration. *Journal of Statistical Software* 40(8), 1–18.
- Engle, R. (2002). Dynamic conditional correlation - a simple class of multivariate GARCH models. *Journal of Business and Economic Statistics* 20, 339–350.
- Engle, R. and B. Kelly (2012). Dynamic equicorrelation. *Journal of Business Economics & Statistics* 30, 212–228.
- Filardo, A. (1994). Business cycles phases and their transitions. *Journal of Business and Economic Statistics* 12, 299–308.
- Gray, S. (1996). Modeling the conditional distribution of interest rates as a regime-switching process. *Journal of Financial Economics* 43, 493–530.
- Haas, M., S. Mittnik, and M. Paolella (2004). A new approach to markov-switching GARCH models. *Journal of Financial Econometrics* 2, 493–530.
- Hamilton, J. D. and G. Lin (1996). Stock market volatility and the business cycle. *Journal of Applied Econometrics* 11, 573–593.
- Harvey, A. and T. Chakravarty (2008). Beta-t-(e)garch. Working Paper series, University of Cambridge.
- Jondeau, E. and M. Rockinger (2006). The Copula-GARCH model of conditional dependencies: An international stock market application. *Journal of International Money and Finance* 23, 827–853.
- Kim, C.-J., J. Piger, and R. Starz (2008). Estimation of markov regime-switching regression models with endogenous switching. *Journal of Econometrics* 143, 263–273.
- Klaassen, F. (2002). Improving GARCH volatility forecasts with regime-switching GARCH. *Empirical Economics* 27, 363–394.

- Leonidas, S. and F. Italo de Paula (2011). Correlation of financial markets in times of crisis. *ArXiv e-prints 1102.1339*.
- Magnus, J. and H. Neudecker (1999). *Matrix Differential Calculus with Applications in Statistics and Econometrics*. Wiley.
- Muler, N. and V. Yohai (2008). Robust estimates for GARCH models. *Journal of Statistical Planning and Inference 138*, 2918–2940.
- Nelson, D. and D. Foster (1994). Asymptotic filtering theory for univariate Arch models. *Econometrica 62*, 1–41.
- Officer, R. (1973). The variability of the market factor of the new york stock exchange. *Journal of Business 46*, 434–453.
- Patton, A. (2006). Estimation of multivariate models for time series of possibly different lengths. *Journal of Applied Econometrics 21*, 147–173.
- Pelletier, D. (2006). Regime switching for dynamic correlations. *Journal of Econometrics 131*, 445–473.
- Price, K. V., R. M. Storn, and J. A. Lampinen (2006). *Differential Evolution: A Practical Approach to Global Optimization*. Berlin, Germany: Springer-Verlag.
- Ryan, J. A. and J. M. Ulrich (2012). *xts: eXtensible Time Series*. R package version 0.8-6.
- Schaller, H. and S. Van Norden (1997). Regime switching in stock market returns. *Applied Financial Economics 7*, 177–191.

NATIONAL BANK OF BELGIUM - WORKING PAPERS SERIES

1. "Model-based inflation forecasts and monetary policy rules", by M. Dombrecht and R. Wouters, *Research Series*, February 2000.
2. "The use of robust estimators as measures of core inflation", by L. Aucremanne, *Research Series*, February 2000.
3. "Performances économiques des Etats-Unis dans les années nonante", by A. Nyssens, P. Butzen and P. Bisciari, *Document Series*, March 2000.
4. "A model with explicit expectations for Belgium", by P. Jeanfils, *Research Series*, March 2000.
5. "Growth in an open economy: Some recent developments", by S. Turnovsky, *Research Series*, May 2000.
6. "Knowledge, technology and economic growth: An OECD perspective", by I. Visco, A. Bassanini and S. Scarpetta, *Research Series*, May 2000.
7. "Fiscal policy and growth in the context of European integration", by P. Masson, *Research Series*, May 2000.
8. "Economic growth and the labour market: Europe's challenge", by C. Wyplosz, *Research Series*, May 2000.
9. "The role of the exchange rate in economic growth: A euro-zone perspective", by R. MacDonald, *Research Series*, May 2000.
10. "Monetary union and economic growth", by J. Vickers, *Research Series*, May 2000.
11. "Politique monétaire et prix des actifs: le cas des États-Unis", by Q. Wibaut, *Document Series*, August 2000.
12. "The Belgian industrial confidence indicator: Leading indicator of economic activity in the euro area?", by J.-J. Vanhaelen, L. Dresse and J. De Mulder, *Document Series*, November 2000.
13. "Le financement des entreprises par capital-risque", by C. Rigo, *Document Series*, February 2001.
14. "La nouvelle économie" by P. Bisciari, *Document Series*, March 2001.
15. "De kostprijs van bankkredieten", by A. Bruggeman and R. Wouters, *Document Series*, April 2001.
16. "A guided tour of the world of rational expectations models and optimal policies", by Ph. Jeanfils, *Research Series*, May 2001.
17. "Attractive prices and euro - Rounding effects on inflation", by L. Aucremanne and D. Cornille, *Documents Series*, November 2001.
18. "The interest rate and credit channels in Belgium: An investigation with micro-level firm data", by P. Butzen, C. Fuss and Ph. Vermeulen, *Research series*, December 2001.
19. "Openness, imperfect exchange rate pass-through and monetary policy", by F. Smets and R. Wouters, *Research series*, March 2002.
20. "Inflation, relative prices and nominal rigidities", by L. Aucremanne, G. Brys, M. Hubert, P. J. Rousseeuw and A. Struyf, *Research series*, April 2002.
21. "Lifting the burden: Fundamental tax reform and economic growth", by D. Jorgenson, *Research series*, May 2002.
22. "What do we know about investment under uncertainty?", by L. Trigeorgis, *Research series*, May 2002.
23. "Investment, uncertainty and irreversibility: Evidence from Belgian accounting data" by D. Cassimon, P.-J. Engelen, H. Meersman and M. Van Wouwe, *Research series*, May 2002.
24. "The impact of uncertainty on investment plans", by P. Butzen, C. Fuss and Ph. Vermeulen, *Research series*, May 2002.
25. "Investment, protection, ownership, and the cost of capital", by Ch. P. Himmelberg, R. G. Hubbard and I. Love, *Research series*, May 2002.
26. "Finance, uncertainty and investment: Assessing the gains and losses of a generalised non-linear structural approach using Belgian panel data", by M. Gérard and F. Verschueren, *Research series*, May 2002.
27. "Capital structure, firm liquidity and growth", by R. Anderson, *Research series*, May 2002.
28. "Structural modelling of investment and financial constraints: Where do we stand?", by J.-B. Chatelain, *Research series*, May 2002.
29. "Financing and investment interdependencies in unquoted Belgian companies: The role of venture capital", by S. Manigart, K. Baeyens, I. Verschueren, *Research series*, May 2002.
30. "Development path and capital structure of Belgian biotechnology firms", by V. Bastin, A. Corhay, G. Hübner and P.-A. Michel, *Research series*, May 2002.
31. "Governance as a source of managerial discipline", by J. Franks, *Research series*, May 2002.
32. "Financing constraints, fixed capital and R&D investment decisions of Belgian firms", by M. Cincera, *Research series*, May 2002.

33. "Investment, R&D and liquidity constraints: A corporate governance approach to the Belgian evidence", by P. Van Cayseele, *Research series*, May 2002.
34. "On the origins of the Franco-German EMU controversies", by I. Maes, *Research series*, July 2002.
35. "An estimated dynamic stochastic general equilibrium model of the euro area", by F. Smets and R. Wouters, *Research series*, October 2002.
36. "The labour market and fiscal impact of labour tax reductions: The case of reduction of employers' social security contributions under a wage norm regime with automatic price indexing of wages", by K. Burggraeve and Ph. Du Caju, *Research series*, March 2003.
37. "Scope of asymmetries in the euro area", by S. Ide and Ph. Moës, *Document series*, March 2003.
38. "De autonijverheid in België: Het belang van het toeleveringsnetwerk rond de assemblage van personenauto's", by F. Coppens and G. van Gastel, *Document series*, June 2003.
39. "La consommation privée en Belgique", by B. Eugène, Ph. Jeanfils and B. Robert, *Document series*, June 2003.
40. "The process of European monetary integration: A comparison of the Belgian and Italian approaches", by I. Maes and L. Quaglia, *Research series*, August 2003.
41. "Stock market valuation in the United States", by P. Bisciari, A. Durré and A. Nyssens, *Document series*, November 2003.
42. "Modeling the term structure of interest rates: Where do we stand?", by K. Maes, *Research series*, February 2004.
43. "Interbank exposures: An empirical examination of system risk in the Belgian banking system", by H. Degryse and G. Nguyen, *Research series*, March 2004.
44. "How frequently do prices change? Evidence based on the micro data underlying the Belgian CPI", by L. Aucremanne and E. Dhyne, *Research series*, April 2004.
45. "Firms' investment decisions in response to demand and price uncertainty", by C. Fuss and Ph. Vermeulen, *Research series*, April 2004.
46. "SMEs and bank lending relationships: The impact of mergers", by H. Degryse, N. Masschelein and J. Mitchell, *Research series*, May 2004.
47. "The determinants of pass-through of market conditions to bank retail interest rates in Belgium", by F. De Graeve, O. De Jonghe and R. Vander Venet, *Research series*, May 2004.
48. "Sectoral vs. country diversification benefits and downside risk", by M. Emiris, *Research series*, May 2004.
49. "How does liquidity react to stress periods in a limit order market?", by H. Beltran, A. Durré and P. Giot, *Research series*, May 2004.
50. "Financial consolidation and liquidity: Prudential regulation and/or competition policy?", by P. Van Cayseele, *Research series*, May 2004.
51. "Basel II and operational risk: Implications for risk measurement and management in the financial sector", by A. Chapelle, Y. Crama, G. Hübner and J.-P. Peters, *Research series*, May 2004.
52. "The efficiency and stability of banks and markets", by F. Allen, *Research series*, May 2004.
53. "Does financial liberalization spur growth?", by G. Bekaert, C.R. Harvey and C. Lundblad, *Research series*, May 2004.
54. "Regulating financial conglomerates", by X. Freixas, G. Lóránth, A.D. Morrison and H.S. Shin, *Research series*, May 2004.
55. "Liquidity and financial market stability", by M. O'Hara, *Research series*, May 2004.
56. "Economisch belang van de Vlaamse zeehavens: Verslag 2002", by F. Lagneaux, *Document series*, June 2004.
57. "Determinants of euro term structure of credit spreads", by A. Van Landschoot, *Research series*, July 2004.
58. "Macroeconomic and monetary policy-making at the European Commission, from the Rome Treaties to the Hague Summit", by I. Maes, *Research series*, July 2004.
59. "Liberalisation of network industries: Is electricity an exception to the rule?", by F. Coppens and D. Vivet, *Document series*, September 2004.
60. "Forecasting with a Bayesian DSGE model: An application to the euro area", by F. Smets and R. Wouters, *Research series*, September 2004.
61. "Comparing shocks and frictions in US and euro area business cycle: A Bayesian DSGE approach", by F. Smets and R. Wouters, *Research series*, October 2004.
62. "Voting on pensions: A survey", by G. de Walque, *Research series*, October 2004.
63. "Asymmetric growth and inflation developments in the acceding countries: A new assessment", by S. Ide and P. Moës, *Research series*, October 2004.
64. "Importance économique du Port Autonome de Liège: rapport 2002", by F. Lagneaux, *Document series*, November 2004.

65. "Price-setting behaviour in Belgium: What can be learned from an ad hoc survey", by L. Aucremanne and M. Druant, *Research series*, March 2005.
66. "Time-dependent versus state-dependent pricing: A panel data approach to the determinants of Belgian consumer price changes", by L. Aucremanne and E. Dhyne, *Research series*, April 2005.
67. "Indirect effects – A formal definition and degrees of dependency as an alternative to technical coefficients", by F. Coppens, *Research series*, May 2005.
68. "Noname – A new quarterly model for Belgium", by Ph. Jeanfils and K. Burggraeve, *Research series*, May 2005.
69. "Economic importance of the Flemish maritime ports: Report 2003", by F. Lagneaux, *Document series*, May 2005.
70. "Measuring inflation persistence: A structural time series approach", by M. Dossche and G. Everaert, *Research series*, June 2005.
71. "Financial intermediation theory and implications for the sources of value in structured finance markets", by J. Mitchell, *Document series*, July 2005.
72. "Liquidity risk in securities settlement", by J. Devriese and J. Mitchell, *Research series*, July 2005.
73. "An international analysis of earnings, stock prices and bond yields", by A. Durré and P. Giot, *Research series*, September 2005.
74. "Price setting in the euro area: Some stylized facts from Individual Consumer Price Data", by E. Dhyne, L. J. Álvarez, H. Le Bihan, G. Veronese, D. Dias, J. Hoffmann, N. Jonker, P. Lünemann, F. Rumler and J. Vilmunen, *Research series*, September 2005.
75. "Importance économique du Port Autonome de Liège: rapport 2003", by F. Lagneaux, *Document series*, October 2005.
76. "The pricing behaviour of firms in the euro area: New survey evidence", by S. Fabiani, M. Druant, I. Hernando, C. Kwapil, B. Landau, C. Loupias, F. Martins, T. Mathä, R. Sabbatini, H. Stahl and A. Stokman, *Research series*, November 2005.
77. "Income uncertainty and aggregate consumption", by L. Pozzi, *Research series*, November 2005.
78. "Crédits aux particuliers - Analyse des données de la Centrale des Crédits aux Particuliers", by H. De Doncker, *Document series*, January 2006.
79. "Is there a difference between solicited and unsolicited bank ratings and, if so, why?", by P. Van Roy, *Research series*, February 2006.
80. "A generalised dynamic factor model for the Belgian economy - Useful business cycle indicators and GDP growth forecasts", by Ch. Van Nieuwenhuyze, *Research series*, February 2006.
81. "Réduction linéaire de cotisations patronales à la sécurité sociale et financement alternatif", by Ph. Jeanfils, L. Van Meensel, Ph. Du Caju, Y. Saks, K. Buysse and K. Van Cauter, *Document series*, March 2006.
82. "The patterns and determinants of price setting in the Belgian industry", by D. Cornille and M. Dossche, *Research series*, May 2006.
83. "A multi-factor model for the valuation and risk management of demand deposits", by H. Dewachter, M. Lyrío and K. Maes, *Research series*, May 2006.
84. "The single European electricity market: A long road to convergence", by F. Coppens and D. Vivet, *Document series*, May 2006.
85. "Firm-specific production factors in a DSGE model with Taylor price setting", by G. de Walque, F. Smets and R. Wouters, *Research series*, June 2006.
86. "Economic importance of the Belgian ports: Flemish maritime ports and Liège port complex - Report 2004", by F. Lagneaux, *Document series*, June 2006.
87. "The response of firms' investment and financing to adverse cash flow shocks: The role of bank relationships", by C. Fuss and Ph. Vermeulen, *Research series*, July 2006.
88. "The term structure of interest rates in a DSGE model", by M. Emiris, *Research series*, July 2006.
89. "The production function approach to the Belgian output gap, estimation of a multivariate structural time series model", by Ph. Moës, *Research series*, September 2006.
90. "Industry wage differentials, unobserved ability, and rent-sharing: Evidence from matched worker-firm data, 1995-2002", by R. Plasman, F. Rycx and I. Tojerow, *Research series*, October 2006.
91. "The dynamics of trade and competition", by N. Chen, J. Imbs and A. Scott, *Research series*, October 2006.
92. "A New Keynesian model with unemployment", by O. Blanchard and J. Gali, *Research series*, October 2006.
93. "Price and wage setting in an integrating Europe: Firm level evidence", by F. Abraham, J. Konings and S. Vanormelingen, *Research series*, October 2006.
94. "Simulation, estimation and welfare implications of monetary policies in a 3-country NOEM model", by J. Plasmans, T. Michalak and J. Fornero, *Research series*, October 2006.

95. "Inflation persistence and price-setting behaviour in the euro area: A summary of the Inflation Persistence Network evidence ", by F. Altissimo, M. Ehrmann and F. Smets, *Research series*, October 2006.
96. "How wages change: Micro evidence from the International Wage Flexibility Project", by W.T. Dickens, L. Goette, E.L. Groshen, S. Holden, J. Messina, M.E. Schweitzer, J. Turunen and M. Ward, *Research series*, October 2006.
97. "Nominal wage rigidities in a new Keynesian model with frictional unemployment", by V. Bodart, G. de Walque, O. Pierrard, H.R. Sneessens and R. Wouters, *Research series*, October 2006.
98. "Dynamics on monetary policy in a fair wage model of the business cycle", by D. De la Croix, G. de Walque and R. Wouters, *Research series*, October 2006.
99. "The kinked demand curve and price rigidity: Evidence from scanner data", by M. Dossche, F. Heylen and D. Van den Poel, *Research series*, October 2006.
100. "Lumpy price adjustments: A microeconomic analysis", by E. Dhyne, C. Fuss, H. Peseran and P. Sevestre, *Research series*, October 2006.
101. "Reasons for wage rigidity in Germany", by W. Franz and F. Pfeiffer, *Research series*, October 2006.
102. "Fiscal sustainability indicators and policy design in the face of ageing", by G. Langenus, *Research series*, October 2006.
103. "Macroeconomic fluctuations and firm entry: Theory and evidence", by V. Lewis, *Research series*, October 2006.
104. "Exploring the CDS-bond basis", by J. De Wit, *Research series*, November 2006.
105. "Sector concentration in loan portfolios and economic capital", by K. Düllmann and N. Masschelein, *Research series*, November 2006.
106. "R&D in the Belgian pharmaceutical sector", by H. De Doncker, *Document series*, December 2006.
107. "Importance et évolution des investissements directs en Belgique", by Ch. Piette, *Document series*, January 2007.
108. "Investment-specific technology shocks and labor market frictions", by R. De Bock, *Research series*, February 2007.
109. "Shocks and frictions in US business cycles: A Bayesian DSGE approach", by F. Smets and R. Wouters, *Research series*, February 2007.
110. "Economic impact of port activity: A disaggregate analysis. The case of Antwerp", by F. Coppens, F. Lagneaux, H. Meersman, N. Sellekaerts, E. Van de Voorde, G. van Gastel, Th. Vanelander, A. Verhetsel, *Document series*, February 2007.
111. "Price setting in the euro area: Some stylised facts from individual producer price data", by Ph. Vermeulen, D. Dias, M. Dossche, E. Gautier, I. Hernando, R. Sabbatini, H. Stahl, *Research series*, March 2007.
112. "Assessing the gap between observed and perceived inflation in the euro area: Is the credibility of the HICP at stake?", by L. Aucremanne, M. Collin and Th. Stragier, *Research series*, April 2007.
113. "The spread of Keynesian economics: A comparison of the Belgian and Italian experiences", by I. Maes, *Research series*, April 2007.
114. "Imports and exports at the level of the firm: Evidence from Belgium", by M. Muûls and M. Pisu, *Research series*, May 2007.
115. "Economic importance of the Belgian ports: Flemish maritime ports and Liège port complex - Report 2005", by F. Lagneaux, *Document series*, May 2007.
116. "Temporal distribution of price changes: Staggering in the large and synchronization in the small", by E. Dhyne and J. Konieczny, *Research series*, June 2007.
117. "Can excess liquidity signal an asset price boom?", by A. Bruggeman, *Research series*, August 2007.
118. "The performance of credit rating systems in the assessment of collateral used in Eurosystem monetary policy operations", by F. Coppens, F. González and G. Winkler, *Research series*, September 2007.
119. "The determinants of stock and bond return comovements", by L. Baele, G. Bekaert and K. Inghelbrecht, *Research series*, October 2007.
120. "Monitoring pro-cyclicality under the capital requirements directive: Preliminary concepts for developing a framework", by N. Masschelein, *Document series*, October 2007.
121. "Dynamic order submission strategies with competition between a dealer market and a crossing network", by H. Degryse, M. Van Achter and G. Wuyts, *Research series*, November 2007.
122. "The gas chain: Influence of its specificities on the liberalisation process", by C. Swartenbroeckx, *Document series*, November 2007.
123. "Failure prediction models: Performance, disagreements, and internal rating systems", by J. Mitchell and P. Van Roy, *Research series*, December 2007.
124. "Downward wage rigidity for different workers and firms: An evaluation for Belgium using the IWFP procedure", by Ph. Du Caju, C. Fuss and L. Wintr, *Research series*, December 2007.
125. "Economic importance of Belgian transport logistics", by F. Lagneaux, *Document series*, January 2008.

126. "Some evidence on late bidding in eBay auctions", by L. Wintr, *Research series*, January 2008.
127. "How do firms adjust their wage bill in Belgium? A decomposition along the intensive and extensive margins", by C. Fuss, *Research series*, January 2008.
128. "Exports and productivity – Comparable evidence for 14 countries", by The International Study Group on Exports and Productivity, *Research series*, February 2008.
129. "Estimation of monetary policy preferences in a forward-looking model: A Bayesian approach", by P. Ilbas, *Research series*, March 2008.
130. "Job creation, job destruction and firms' international trade involvement", by M. Pisu, *Research series*, March 2008.
131. "Do survey indicators let us see the business cycle? A frequency decomposition", by L. Dresse and Ch. Van Nieuwenhuyze, *Research series*, March 2008.
132. "Searching for additional sources of inflation persistence: The micro-price panel data approach", by R. Raciborski, *Research series*, April 2008.
133. "Short-term forecasting of GDP using large monthly datasets - A pseudo real-time forecast evaluation exercise", by K. Barhoumi, S. Benk, R. Cristadoro, A. Den Reijer, A. Jakaitiene, P. Jelonek, A. Rua, G. Rünstler, K. Ruth and Ch. Van Nieuwenhuyze, *Research series*, June 2008.
134. "Economic importance of the Belgian ports: Flemish maritime ports, Liège port complex and the port of Brussels - Report 2006", by S. Vennix, *Document series*, June 2008.
135. "Imperfect exchange rate pass-through: The role of distribution services and variable demand elasticity", by Ph. Jeanfils, *Research series*, August 2008.
136. "Multivariate structural time series models with dual cycles: Implications for measurement of output gap and potential growth", by Ph. Moës, *Research series*, August 2008.
137. "Agency problems in structured finance - A case study of European CLOs", by J. Keller, *Document series*, August 2008.
138. "The efficiency frontier as a method for gauging the performance of public expenditure: A Belgian case study", by B. Eugène, *Research series*, September 2008.
139. "Exporters and credit constraints. A firm-level approach", by M. Muûls, *Research series*, September 2008.
140. "Export destinations and learning-by-exporting: Evidence from Belgium", by M. Pisu, *Research series*, September 2008.
141. "Monetary aggregates and liquidity in a neo-Wicksellian framework", by M. Canzoneri, R. Cumby, B. Diba and D. López-Salido, *Research series*, October 2008.
142. "Liquidity, inflation and asset prices in a time-varying framework for the euro area, by Ch. Baumeister, E. Durinck and G. Peersman, *Research series*, October 2008.
143. "The bond premium in a DSGE model with long-run real and nominal risks", by G. D. Rudebusch and E. T. Swanson, *Research series*, October 2008.
144. "Imperfect information, macroeconomic dynamics and the yield curve: An encompassing macro-finance model", by H. Dewachter, *Research series*, October 2008.
145. "Housing market spillovers: Evidence from an estimated DSGE model", by M. Iacoviello and S. Neri, *Research series*, October 2008.
146. "Credit frictions and optimal monetary policy", by V. Cúrdia and M. Woodford, *Research series*, October 2008.
147. "Central Bank misperceptions and the role of money in interest rate rules", by G. Beck and V. Wieland, *Research series*, October 2008.
148. "Financial (in)stability, supervision and liquidity injections: A dynamic general equilibrium approach", by G. de Walque, O. Pierrard and A. Rouabah, *Research series*, October 2008.
149. "Monetary policy, asset prices and macroeconomic conditions: A panel-VAR study", by K. Assenmacher-Wesche and S. Gerlach, *Research series*, October 2008.
150. "Risk premiums and macroeconomic dynamics in a heterogeneous agent model", by F. De Graeve, M. Dossche, M. Emiris, H. Sneessens and R. Wouters, *Research series*, October 2008.
151. "Financial factors in economic fluctuations", by L. J. Christiano, R. Motto and M. Rotagno, *Research series*, to be published.
152. "Rent-sharing under different bargaining regimes: Evidence from linked employer-employee data", by M. Rusinek and F. Rycx, *Research series*, December 2008.
153. "Forecast with judgment and models", by F. Monti, *Research series*, December 2008.
154. "Institutional features of wage bargaining in 23 European countries, the US and Japan", by Ph. Du Caju, E. Gautier, D. Momferatou and M. Ward-Warmedinger, *Research series*, December 2008.
155. "Fiscal sustainability and policy implications for the euro area", by F. Balassone, J. Cunha, G. Langenus, B. Manzke, J. Pavot, D. Prammer and P. Tommasino, *Research series*, January 2009.
156. "Understanding sectoral differences in downward real wage rigidity: Workforce composition, institutions, technology and competition", by Ph. Du Caju, C. Fuss and L. Wintr, *Research series*, February 2009.

157. "Sequential bargaining in a New Keynesian model with frictional unemployment and staggered wage negotiation", by G. de Walque, O. Pierrard, H. Sneessens and R. Wouters, *Research series*, February 2009.
158. "Economic importance of air transport and airport activities in Belgium", by F. Kupfer and F. Lagneaux, *Document series*, March 2009.
159. "Rigid labour compensation and flexible employment? Firm-Level evidence with regard to productivity for Belgium", by C. Fuss and L. Wintr, *Research series*, March 2009.
160. "The Belgian iron and steel industry in the international context", by F. Lagneaux and D. Vivet, *Document series*, March 2009.
161. "Trade, wages and productivity", by K. Behrens, G. Mion, Y. Murata and J. Südekum, *Research series*, March 2009.
162. "Labour flows in Belgium", by P. Heuse and Y. Saks, *Research series*, April 2009.
163. "The young Lamfalussy: An empirical and policy-oriented growth theorist", by I. Maes, *Research series*, April 2009.
164. "Inflation dynamics with labour market matching: Assessing alternative specifications", by K. Christoffel, J. Costain, G. de Walque, K. Kuester, T. Linzert, S. Millard and O. Pierrard, *Research series*, May 2009.
165. "Understanding inflation dynamics: Where do we stand?", by M. Dossche, *Research series*, June 2009.
166. "Input-output connections between sectors and optimal monetary policy", by E. Kara, *Research series*, June 2009.
167. "Back to the basics in banking? A micro-analysis of banking system stability", by O. De Jonghe, *Research series*, June 2009.
168. "Model misspecification, learning and the exchange rate disconnect puzzle", by V. Lewis and A. Markiewicz, *Research series*, July 2009.
169. "The use of fixed-term contracts and the labour adjustment in Belgium", by E. Dhyne and B. Mahy, *Research series*, July 2009.
170. "Analysis of business demography using markov chains – An application to Belgian data", by F. Coppens and F. Verduyn, *Research series*, July 2009.
171. "A global assessment of the degree of price stickiness - Results from the NBB business survey", by E. Dhyne, *Research series*, July 2009.
172. "Economic importance of the Belgian ports: Flemish maritime ports, Liège port complex and the port of Brussels - Report 2007", by C. Mathys, *Document series*, July 2009.
173. "Evaluating a monetary business cycle model with unemployment for the euro area", by N. Groshenny, *Research series*, July 2009.
174. "How are firms' wages and prices linked: Survey evidence in Europe", by M. Druant, S. Fabiani and G. Kezdi, A. Lamo, F. Martins and R. Sabbatini, *Research series*, August 2009.
175. "Micro-data on nominal rigidity, inflation persistence and optimal monetary policy", by E. Kara, *Research series*, September 2009.
176. "On the origins of the BIS macro-prudential approach to financial stability: Alexandre Lamfalussy and financial fragility", by I. Maes, *Research series*, October 2009.
177. "Incentives and tranche retention in securitisation: A screening model", by I. Fender and J. Mitchell, *Research series*, October 2009.
178. "Optimal monetary policy and firm entry", by V. Lewis, *Research series*, October 2009.
179. "Staying, dropping, or switching: The impacts of bank mergers on small firms", by H. Degryse, N. Masschelein and J. Mitchell, *Research series*, October 2009.
180. "Inter-industry wage differentials: How much does rent sharing matter?", by Ph. Du Caju, F. Rycx and I. Tojerow, *Research series*, October 2009.
181. "Empirical evidence on the aggregate effects of anticipated and unanticipated US tax policy shocks", by K. Mertens and M. O. Ravn, *Research series*, November 2009.
182. "Downward nominal and real wage rigidity: Survey evidence from European firms", by J. Babecký, Ph. Du Caju, T. Kosma, M. Lawless, J. Messina and T. Rõõm, *Research series*, November 2009.
183. "The margins of labour cost adjustment: Survey evidence from European firms", by J. Babecký, Ph. Du Caju, T. Kosma, M. Lawless, J. Messina and T. Rõõm, *Research series*, November 2009.
184. "Discriminatory fees, coordination and investment in shared ATM networks" by S. Ferrari, *Research series*, January 2010.
185. "Self-fulfilling liquidity dry-ups", by F. Malherbe, *Research series*, March 2010.
186. "The development of monetary policy in the 20th century - some reflections", by O. Issing, *Research series*, April 2010.
187. "Getting rid of Keynes? A survey of the history of macroeconomics from Keynes to Lucas and beyond", by M. De Vroey, *Research series*, April 2010.
188. "A century of macroeconomic and monetary thought at the National Bank of Belgium", by I. Maes, *Research series*, April 2010.

189. "Inter-industry wage differentials in EU countries: What do cross-country time-varying data add to the picture?", by Ph. Du Caju, G. Kátay, A. Lamo, D. Nicolitsas and S. Poelhekke, *Research series*, April 2010.
190. "What determines euro area bank CDS spreads?", by J. Annaert, M. De Ceuster, P. Van Roy and C. Vespro, *Research series*, May 2010.
191. "The incidence of nominal and real wage rigidity: An individual-based sectoral approach", by J. Messina, Ph. Du Caju, C. F. Duarte, N. L. Hansen, M. Izquierdo, *Research series*, June 2010.
192. "Economic importance of the Belgian ports: Flemish maritime ports, Liège port complex and the port of Brussels - Report 2008", by C. Mathys, *Document series*, July 2010.
193. "Wages, labor or prices: how do firms react to shocks?", by E. Dhyne and M. Druant, *Research series*, July 2010.
194. "Trade with China and skill upgrading: Evidence from Belgian firm level data", by G. Mion, H. Vandenbussche, and L. Zhu, *Research series*, September 2010.
195. "Trade crisis? What trade crisis?", by K. Behrens, G. Corcos and G. Mion, *Research series*, September 2010.
196. "Trade and the global recession", by J. Eaton, S. Kortum, B. Neiman and J. Romalis, *Research series*, October 2010.
197. "Internationalization strategy and performance of small and medium sized enterprises", by J. Onkelinx and L. Sleuwaegen, *Research series*, October 2010.
198. "The internationalization process of firms: From exports to FDI?", by P. Conconi, A. Sapir and M. Zanardi, *Research series*, October 2010.
199. "Intermediaries in international trade: Direct versus indirect modes of export", by A. B. Bernard, M. Grazzi and C. Tomasi, *Research series*, October 2010.
200. "Trade in services: IT and task content", by A. Ariu and G. Mion, *Research series*, October 2010.
201. "The productivity and export spillovers of the internationalisation behaviour of Belgian firms", by M. Dumont, B. Merlevede, C. Piette and G. Rayp, *Research series*, October 2010.
202. "Market size, competition, and the product mix of exporters", by T. Mayer, M. J. Melitz and G. I. P. Ottaviano, *Research series*, October 2010.
203. "Multi-product exporters, carry-along trade and the margins of trade", by A. B. Bernard, I. Van Beveren and H. Vandenbussche, *Research series*, October 2010.
204. "Can Belgian firms cope with the Chinese dragon and the Asian tigers? The export performance of multi-product firms on foreign markets" by F. Abraham and J. Van Hove, *Research series*, October 2010.
205. "Immigration, offshoring and American jobs", by G. I. P. Ottaviano, G. Peri and G. C. Wright, *Research series*, October 2010.
206. "The effects of internationalisation on domestic labour demand by skills: Firm-level evidence for Belgium", by L. Cuyvers, E. Dhyne, and R. Soeng, *Research series*, October 2010.
207. "Labour demand adjustment: Does foreign ownership matter?", by E. Dhyne, C. Fuss and C. Mathieu, *Research series*, October 2010.
208. "The Taylor principle and (in-)determinacy in a New Keynesian model with hiring frictions and skill loss", by A. Rannenberg, *Research series*, November 2010.
209. "Wage and employment effects of a wage norm: The Polish transition experience" by A. de Crombrughe and G. de Walque, *Research series*, February 2011.
210. "Estimating monetary policy reaction functions: A discrete choice approach" by J. Boeckx, *Research series*, February 2011.
211. "Firm entry, inflation and the monetary transmission mechanism" by V. Lewis and C. Poilly, *Research series*, February 2011.
212. "The link between mobile telephony arrears and credit arrears" by H. De Doncker, *Document series*, March 2011.
213. "Development of a financial health indicator based on companies' annual accounts", by D. Vivet, *Document series*, April 2011.
214. "Wage structure effects of international trade: Evidence from a small open economy", by Ph. Du Caju, F. Rycx and I. Tojerow, *Research series*, April 2011.
215. "Economic importance of the Belgian ports: Flemish maritime ports, Liège port complex and the port of Brussels - Report 2009", by C. Mathys, *Document series*, June 2011.
216. "Verti-zontal differentiation in monopolistic competition", by F. Di Comite, J.-F. Thisse and H. Vandenbussche, *Research series*, October 2011.
217. "The evolution of Alexandre Lamfalussy's thought on the international and European monetary system (1961-1993)" by I. Maes, *Research series*, November 2011.
218. "Economic importance of air transport and airport activities in Belgium – Report 2009", by X. Deville and S. Vennix, *Document series*, December 2011.

219. "Comparative advantage, multi-product firms and trade liberalisation: An empirical test", by C. Fuss and L. Zhu, *Research series*, January 2012.
220. "Institutions and export dynamics", by L. Araujo, G. Mion and E. Ornelas, *Research series*, February 2012.
221. "Implementation of EU legislation on rail liberalisation in Belgium, France, Germany and the Netherlands", by X. Deville and F. Verduyn, *Document series*, March 2012.
222. "Tommaso Padoa-Schioppa and the origins of the euro", by I. Maes, *Document series*, March 2012.
223. "(Not so) easy come, (still) easy go? Footloose multinationals revisited", by P. Blanchard, E. Dhyne, C. Fuss and C. Mathieu, *Research series*, March 2012.
224. "Asymmetric information in credit markets, bank leverage cycles and macroeconomic dynamics", by A. Rannenberg, *Research series*, April 2012.
225. "Economic importance of the Belgian ports: Flemish maritime ports, Liège port complex and the port of Brussels - Report 2010", by C. Mathys, *Document series*, July 2012.
226. "Dissecting the dynamics of the US trade balance in an estimated equilibrium model", by P. Jacob and G. Peersman, *Research series*, August 2012.
227. "Regime switches in volatility and correlation of financial institutions", by K. Boudt, J. Daniélsson, S.J. Koopman and A. Lucas, *Research series*, October 2012.